

Albert Tucker: Traveller's Tales

15 September to 10 February 2013
Albert & Barbara Tucker Gallery
Curator: Kendrah Morgan

HEIDE
MUSEUM
OF MODERN
ART



Albert Tucker
Paris Street 1950
gouache, watercolour, brush and
ink and oil on paper on
cardboard
41.7 x 50 cm
Heide Museum of Modern Art
Gift of Barbara Tucker 2005

On his departure for Europe in October 1947 Albert Tucker famously observed: 'I am a refugee from Australia culture'. Disenchanted with the conservatism of the local art scene, he joined the postwar exodus of artists hungry for firsthand experience of European art—past and present—which had been inaccessible during the years of world conflict.

Tucker planned to spend twelve months abroad engaging directly with international art and culture. The one year extended into thirteen—amounting to a sustained and transformative period of dedicated artistic experimentation and development. After an abortive start in London, he made Paris his first base and soaked up the atmosphere while investigating the formal and technical advancements in the modern art all around him: Cubism, Art Brut, and Expressionism each informed his new work. Extended periods in Germany and Italy followed, with further artistic discoveries, then a more successful time in London in 1957. His final two years away were spent in New York, where he mixed with

the beatnik generation and experimented with abstraction.

Tucker's expatriate experience also registered a fundamental shift in personal perspective. In 1947 he was painting raw expressionist, polemical imagery that strongly critiqued Australian society and culture. In 1960, when he returned to Melbourne, he had a deeper appreciation for his homeland, its landscape, history and inhabitants, and a refreshed, life-affirming vision. His homecoming, with six solo and sixteen group exhibitions to his name, and sales to New York's Solomon R. Guggenheim Museum and Museum of Modern Art, was triumphant.

This exhibition presents major paintings from Tucker's travels in England, the Continent and America, complemented by a selection of his compelling photographs. It traces the trajectory of Tucker's rising star and reveals pivotal aspects of his aesthetic development while on a path to becoming one of Australia's most individual and important artists.

List of works

This catalogue is arranged alphabetically by artist then chronologically. Measurements are height before width.

Albert Tucker

born 1914 Melbourne, Victoria.
Lived and worked Melbourne.
Died 1999

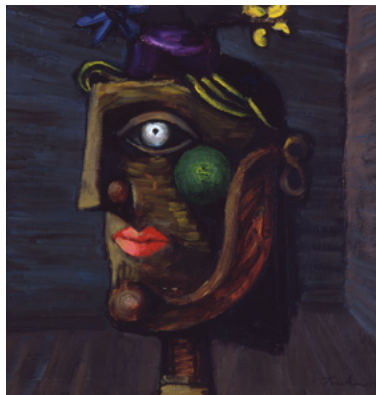
Paris sketchbook c.1948
sketchbook
27.8 x 20.7 cm
Private collection, Melbourne



Camping in the Morris Minor, the Dolomites, Italy, with Mary Dickson c.1951
gelatin silver photograph
40.2 x 30.4 cm
Heide Museum of Modern Art
Gift of Barbara Tucker 2001



Gino Nibbi's Galleria ai Quattro Venti, Rome c.1953
gelatin silver photograph
30.5 x 40.5 cm
Heide Museum of Modern Art
Gift of Barbara Tucker 2001



Girl 1949
oil on plywood
46.1 x 45.6 cm
Heide Museum of Modern Art
On long-term loan from the Albert & Barbara Tucker Foundation



Lover and Dog 1949
oil on canvas on composition board
73.2 x 61 cm
Heide Museum of Modern Art
On long-term loan from the Albert & Barbara Tucker Foundation



Paris Street 1950
gouache, watercolour, brush and ink and oil on paper on cardboard
41.7 x 50 cm
Heide Museum of Modern Art
Gift of Barbara Tucker 2005



Untitled (Four studies) 1950
pencil, watercolour, crayon and gouache on paper
4 parts, each 27.3 x 21.4 cm
Heide Museum of Modern Art
On long-term loan from the Albert & Barbara Tucker Foundation



Woman Rue St Denis I 1950
synthetic polymer paint, brush and ink
on paper
52 x 37 cm
Heide Museum of Modern Art
On long-term loan from the Albert &
Barbara Tucker Foundation



Head 1951
gouache, brush and ink on cardboard
31.5 x 23 cm
Private collection, Melbourne



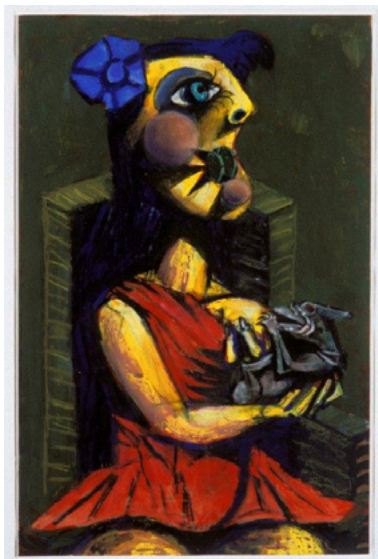
Homicide 1951
oil on canvas on plywood
49.3 x 44.2 cm
Heide Museum of Modern Art
Gift of Barbara Tucker 2008



Rebirth 1951
oil on cardboard
51 x 45.7 cm
Heide Museum of Modern Art
On long-term loan from the Albert &
Barbara Tucker Foundation



Woman and Beast 1951
oil on board
50.9 x 45.5 cm
Heide Museum of Modern Art
Gift of Barbara Tucker 2014



Woman and Beast 1951
synthetic polymer paint, pastel,
watercolour, brush and ink on paper
49.2 x 32 cm
Heide Museum of Modern Art
On long-term loan from the Albert &
Barbara Tucker Foundation



Mary Dickson at Galerie Huit 1952
gelatin silver photograph
30.5 x 40.3 cm
Heide Museum of Modern Art
Gift of Barbara Tucker 2001



Absalom 1953
oil on board
55 x 70 cm
Private collection, Melbourne



Attack of the Beast 1953–55
oil on canvas
100 x 73 cm
Private collection, Sydney



Camping in the Piazza del Popolo, Rome, Italy 1953
gelatin silver photograph
40.4 x 30.5 cm
Heide Museum of Modern Art
Gift of Barbara Tucker 2001



Job 1953
oil on board
70 x 55.5 cm
Heide Museum of Modern Art
Donated through the Australian
Government's Cultural Gifts Program by
Barbara Tucker 2015



Bus Stop 1954
oil on composition board
62 x 81 cm
Heide Museum of Modern Art
Gift of the Albert and Barbara Tucker
Foundation 2017



Entombment 1954
oil on composition board
63 x 93 cm
Albert & Barara Tucker Foundation



Killing 1954
oil on composition board
81 x 62 cm
Heide Museum of Modern Art
On long-term loan from the Albert &
Barbara Tucker Foundation



Wounded Figures 1954
oil on composition board
81 x 62.4 cm
Heide Museum of Modern Art
On long-term loan from the Albert &
Barbara Tucker Foundation



Mourning Disciples 1955
oil on composition board
78.5 x 127 cm
Heide Museum of Modern Art
Donated through the Australian
Government's Cultural Gifts Program by
Barbara Tucker 2015



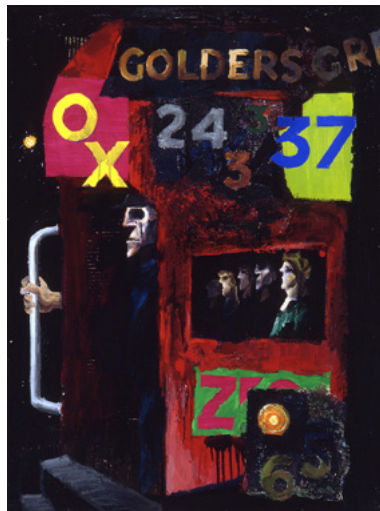
Subway 1955
oil on composition board
94 x 120 cm
Private collection, Melbourne



Wounded Man 1955
oil on composition board
81 x 61 cm
Private collection, Melbourne



Australian Girl in Paris 2 1957
synthetic polymer paint on
composition board
94.5 x 128.5
Private collection, Melbourne



London Bus 1957
oil on composition board
122 x 92 cm
Heide Museum of Modern Art
On long-term loan from the Albert &
Barbara Tucker Foundation



Thames 8 1957
synthetic polymer paint and PVA on
composition board
90.2 x 120.6 cm
Heide Museum of Modern Art
Gift of Barbara Tucker 2005



Thames Homage to Turner (or Thames I)
1957
synthetic polymer paint and PVA on
composition board
91 x 121 cm
Heide Museum of Modern Art
On long-term loan from the Albert &
Barbara Tucker Foundation



Explorer 1958
synthetic polymer paint on
composition board
202 x 81 cm
Private collection, Melbourne



Manhattan Suite 11 1958
synthetic polymer paint on
composition board
56.5 x 71.5 cm
Private collection, Melbourne



Manhattan Suite 2 1958
synthetic polymer paint on
composition board
56.5 x 71.5 cm
Private collection, Melbourne



Cratered Landscape 1959
synthetic polymer paint on
composition board
49.5 x 80 cm
Heide Museum of Modern Art
On long-term loan from the Albert &
Barbara Tucker Foundation



*Jack Kerouac in Albert Tucker's
Apartment, Charles Street, Greenwich
Village, New York with Cindy Lee (Girlfriend
of Robert Graves), at 2am* 1959
gelatin silver photograph
30.4 x 40.3 cm
Heide Museum of Modern Art
Gift of Barbara Tucker 2001



Thames 11 1959
synthetic polymer paint and PVA on
composition board
94.2 x 128.7 cm
Heide Museum of Modern Art
On long-term loan from the Albert &
Barbara Tucker Foundation
