

In Fond Memory: The Barbara Tucker Gift

22 August 2015 to 6 March 2016
Albert & Barbara Tucker Gallery
Curator: Kendrah Morgan

HEIDE
MUSEUM
OF MODERN
ART



Albert Tucker
Barbara Tucker in the Banana Shed,
Springbrook, Queensland 1970
gelatin silver photograph
30.5 x 40.7 cm
Heide Museum of Modern Art
Gift of Barbara Tucker 2001

On 16 May 2015 Heide Museum of Modern Art sadly lost one of its most treasured friends and supporters. Barbara Tucker had a long association with Heide, initially as a personal acquaintance of John and Sunday Reed with her late husband, artist Albert Tucker, then during the evolution of the museum as Heide Fellow (2000), Life Benefactor (2004) and Co-Patron (2005).

Prior to Albert's death in 1999, the Tuckers offered Heide a major donation of artworks, to be transferred progressively over a number of years. To their minds it was a fitting acknowledgement of the role the Reeds had played both in Albert's nascent career, and in supporting and encouraging a number of artists in Melbourne in the late 1930s and 1940s. Heide was a place where a life in art was made possible, thus Albert and Barbara envisaged their donation to the museum as the completion of a circle.

The Tucker Gift is a collection of national significance. As well as over two hundred paintings representing the breadth of Albert Tucker's oeuvre, including his foremost themes and some of his finest achievements, it includes significant paintings and drawings from his and Barbara's holdings by Joy Hester, Sidney Nolan, Arthur Boyd and Danila Vassilieff. In recent years Barbara's vision has seen this collection complemented by her donation of Tucker's personal library of art books and a rich archive of material that sits alongside his extensive art practice—sketchbooks, writings, catalogues, correspondence, photographs, and press clippings—in all an invaluable resource.

This exhibition, selected from works already donated and those on long-term loan, commemorates Barbara's extraordinary contribution to Heide over many years and celebrates her continuing presence in the life of the museum.

List of works

This catalogue is arranged alphabetically by artist then chronologically. Measurements are height before width.

Yosl Bergner

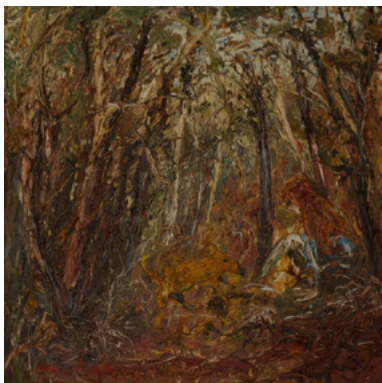
born 1920 Vienna, Austria. Arrived 1937, Australia and Israel from 1950. Died 2017, Tel Aviv.



Man and woman 1942
oil on composition board
43.5 x 59.5 cm
Heide Museum of Modern Art
On long-term loan from the Albert & Barbara Tucker Foundation

Arthur Boyd

born 1920, Melbourne, Victoria. Lived and worked Melbourne. Died 1999



Barbara at Hurstbridge 1968
oil on board
90 x 90 cm
Heide Museum of Modern Art
Courtesy of the Albert Tucker Estate



Portrait of Albert Tucker 1968–69
etching
plate 61 x 43 cm; sheet 79.5 x 57 cm
Heide Museum of Modern Art
Donated through the Australian Government's Cultural Gifts Program
by Barbara Tucker 2015

Joy Hester

born 1920, Melbourne, Victoria. Lived and worked Melbourne. Died 1960



Man c.1944
brush and ink and watercolour on paper
31.5 x 20 cm
Heide Museum of Modern Art
On long-term loan from the Albert & Barbara Tucker Foundation



Man with Square Eyes c.1944
brush and ink on paper
21 x 30.4 cm
Heide Museum of Modern Art
On long-term loan from the Albert & Barbara Tucker Foundation



Nude Man in a Chair c.1944
brush and ink and pen and ink on paper
20.8 x 26.5 cm
Heide Museum of Modern Art
On long-term loan from the Albert & Barbara Tucker Foundation



Woman with Skull-like Head c.1944
brush and ink and pencil on paper
25.9 x 20 cm
Heide Museum of Modern Art
On long-term loan from the Albert &
Barbara Tucker Foundation



Woman in Interior c.1944
brush and ink on paper
30.4 x 21 cm
Heide Museum of Modern Art
On long-term loan from the Albert
& Barbara Tucker Foundation



Stunned Man c.1945
brush and ink and watercolour and
pencil on paper
29.4 x 26 cm
Heide Museum of Modern Art
Gift of Barbara Tucker 2014



Three Figures in a Chair c.1945
pen and ink and watercolour on
paper 26.4 x 20.8 cm
Heide Museum of Modern Art
On long-term loan from the Albert &
Barbara Tucker Foundation



Two Women in a Room c.1942
oil on composition board
38.5 x 46.4 cm
Gift of the Albert & Barbara
Tucker Foundation 2019



Woman with Square Eyes c.1945
brush and ink on paper
31.5 x 20 cm
Heide Museum of Modern Art
On long-term loan from the Albert &
Barbara Tucker Foundation

Sidney Nolan

born 1917, Melbourne, Victoria. Lived and worked Melbourne and London, England from 1953–92. Died 1992, London



Wheat Train Wimmera c.1942
enamel on composition board
61 x 91.5 cm
Heide Museum of Modern Art
Donated through the Australian
Government's Cultural Gifts Program by
Barbara Tucker 2015

Albert Tucker

born 1914, Melbourne, Victoria. Lived and worked Melbourne. Died 1999



Self Portrait c.1939
oil on canvas
34 x 22.5 cm
Heide Museum of Modern Art
Albert Tucker Archive
Gift of Barbara Tucker 2011



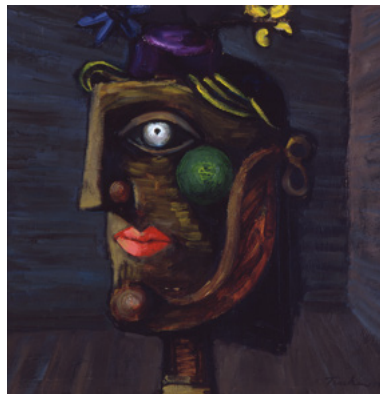
Malvern Street 1938
oil on paperboard
50.5 x 45.5 cm
Heide Museum of Modern Art
Gift of Barbara Tucker 2009



Luna Park 1945
oil on composition board
53 x 81 cm
Heide Museum of Modern Art
Gift of Barbara Tucker 2005



Image of Modern Evil 31 1947
oil on composition board
50.5 x 37.5 cm
Heide Museum of Modern Art
Gift of Barbara Tucker 2005



Girl 1949
oil on plywood
46.1 x 45.6 cm
Heide Museum of Modern Art
On long-term loan from the Albert & Barbara Tucker Foundation



Lover and Dog 1949
oil on canvas on composition board
73.2 x 61 cm
Heide Museum of Modern Art
On long-term loan from the Albert & Barbara Tucker Foundation



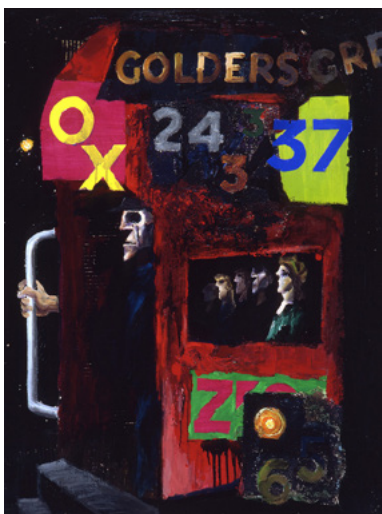
Bus Stop 1954
oil on composition board
62 x 81 cm
Heide Museum of Modern Art
Gift of the Albert and Barbara Tucker Foundation 2017



Encounter 1955
oil on composition board
94.4 x 129 cm
Heide Museum of Modern Art
On long-term loan from the Albert & Barbara Tucker Foundation



King Kelly and His Legions 1957
oil, PVA, foil collage and cardboard on
composition board
96.2 x 130 cm
Heide Museum of Modern Art
Gift of Barbara Tucker 2009



London Bus 1957
oil on composition board
122 x 92 cm
Heide Museum of Modern Art
On long-term loan from the Albert &
Barbara Tucker Foundation



Explorer III 1958
synthetic polymer paint and PVA on
composition board
203 x 81.5 cm
Heide Museum of Modern Art
Gift of Barbara Tucker 2005



Explorer and Parrot 1963
oil on composition board
89 x 120.5 cm
Heide Museum of Modern Art
On long-term loan from the Albert &
Barbara Tucker Foundation



*Barbara Tucker in the Banana Shed,
Springbrook, Queensland* c.1970
gelatin silver photograph
30.5 x 40.7 cm
Heide Museum of Modern Art
Gift of Barbara Tucker 2001



Night Image 1973
oil on composition board
56 x 71 cm
Heide Museum of Modern Art
Gift of Barbara Tucker 2014

Unkown



Mask Sepik River, Papua New Guinea
c.1945–60, collected 1969
wood and natural pigments, with
cane hanging apparatus
39 x 32.3 cm
Heide Museum of Modern Art
On long-term loan from the Albert &
Barbara Tucker Foundation

Unkown



Mask Sepik River, Papua New Guinea
c.1945–60, collected 1969
wood, natural pigments and cowrie
shells
56.5 x 30.3 cm
Heide Museum of Modern Art
On long-term loan from the Albert &
Barbara Tucker Foundation

Unkown



Spirit Figure Sepik River, Papua New Guinea
c.1970s–80s, collected 1969
wood and natural pigments
131 x 33.5 cm
Heide Museum of Modern Art
On long-term loan from the Albert &
Barbara Tucker Foundation

Danila Vassilieff

born 1897, Kagalnitskaya, Russia.
Arrived 1923, Australia. Lived and worked
1929–34 South America, West Indies,
Spain, Portugal, United Kingdom.
Returned 1935, Australia. Died 1958,
Melbourne, Victoria



Fitzroy Girls 1937
oil on canvas on composition board
56 x 47.5 cm
Heide Museum of Modern Art
Gift of Barbara Tucker 2014



Ambrose, Helen, Bert and Joy 1941
oil, charcoal and pencil on canvas on
composition board
55.5 x 60.2 cm
Heide Museum of Modern Art
On long-term loan from the Albert &
Barbara Tucker Foundation
