

## In Fond Memory: The Barbara Tucker Gift

22 August 2015 to 6 March 2016  
Albert and Barbara Tucker Gallery  
Curator: Kendrah Morgan



Albert Tucker  
*Barbara Tucker in the Banana Shed,*  
*Springbrook, Queensland 1970*  
gelatin silver photograph  
30.5 x 40.7 cm  
Heide Museum of Modern Art  
Gift of Barbara Tucker 2001

On 16 May 2015 Heide Museum of Modern Art sadly lost one of its most treasured friends and supporters. Barbara Tucker had a long association with Heide, initially as a personal acquaintance of John and Sunday Reed with her late husband, artist Albert Tucker, then during the evolution of the museum as Heide Fellow (2000), Life Benefactor (2004) and Co-Patron (2005).

Prior to Albert's death in 1999, the Tuckers offered Heide a major donation of artworks, to be transferred progressively over a number of years. To their minds it was a fitting acknowledgement of the role the Reeds had played both in Albert's nascent career, and in supporting and encouraging a number of artists in Melbourne in the late 1930s and 1940s. Heide was a place where a life in art was made possible, thus Albert and Barbara envisaged their donation to the museum as the completion of a circle.

The Tucker Gift is a collection of national significance. As well as over two hundred paintings representing the breadth of Albert Tucker's oeuvre, including his foremost themes and some of his finest achievements, it includes significant paintings and drawings from his and Barbara's holdings by Joy Hester, Sidney Nolan, Arthur Boyd and Danila Vassilieff. In recent years Barbara's vision has seen this collection complemented by her donation of Tucker's personal library of art books and a rich archive of material that sits alongside his extensive art practice—sketchbooks, writings, catalogues, correspondence, photographs, and press clippings—in all an invaluable resource.

This exhibition, selected from works already donated and those on long-term loan, commemorates Barbara's extraordinary contribution to Heide over many years and celebrates her continuing presence in the life of the museum.

# List of works

This catalogue is arranged alphabetically by artist then chronologically. Measurements are height before width before depth.

## Yosl Bergner

born 1920 Vienna;  
arrived 1937 Australia;  
Israel from 1950; died 2017 Tel Aviv



*(Man and woman)* 1942  
oil on composition board  
59.5 x 43.5 cm  
Heide Museum of Modern Art  
On long-term loan from the Albert & Barbara Tucker Foundation

## Arthur Boyd

born 1920 Melbourne;  
died 1999 Melbourne



*(Barbara at Hurstbridge)* 1968  
oil on board  
90 x 90 cm  
Heide Museum of Modern Art  
Courtesy of the Albert Tucker Estate



*Portrait of Albert Tucker* 1968-1969  
etching  
plate 61 x 43 cm; sheet 79.5 x 57 cm  
Heide Museum of Modern Art  
Donated through the Australian  
Government's Cultural Gifts Program by  
Barbara Tucker 2015

## Joy Hester

born 1920 Melbourne;  
died 1960 Melbourne



*(Man)* c.1944  
brush and ink and watercolour on paper  
31.5 x 20 cm  
Heide Museum of Modern Art  
On long-term loan from the Albert & Barbara Tucker Foundation



*(Man with square eyes)* c.1944  
brush and ink on paper  
21 x 30.4 cm  
Heide Museum of Modern Art  
On long-term loan from the Albert & Barbara Tucker Foundation



*(Nude man in a chair)* c.1944  
brush and ink and pen and ink on paper  
20.8 x 26.5 cm  
Heide Museum of Modern Art  
On long-term loan from the Albert & Barbara Tucker Foundation





*(Woman with skull-like head)* c.1944  
brush and ink and pencil on paper  
25.9 x 20 cm  
Heide Museum of Modern Art  
On long-term loan from the Albert & Barbara Tucker Foundation



*(Woman in interior)* c.1944  
brush and ink on paper  
30.4 x 21 cm  
Heide Museum of Modern Art  
On long-term loan from the Albert & Barbara Tucker Foundation



*Stunned Man* c.1945  
brush and ink and watercolour and  
pencil on paper  
29.4 x 26 cm  
Heide Museum of Modern Art  
Gift of Barbara Tucker 2014



*(Three figures in a chair)* c.1945  
pen and ink and watercolour on paper  
26.4 x 20.8 cm  
Heide Museum of Modern Art  
On long-term loan from the Albert & Barbara Tucker Foundation



*(Two women in a room)* c.1942  
oil on composition board  
38.5 x 46.4 cm  
Gift of the Albert & Barbara Tucker  
Foundation 2019



*Woman with Square Eyes* c.1945  
brush and ink on paper  
31.5 x 20 cm  
Heide Museum of Modern Art  
On long-term loan from the Albert & Barbara Tucker Foundation

### **Sidney Nolan**

born 1917 Melbourne;  
died 1992 London, United Kingdom



*Wheat Train Wimmera* c.1942  
enamel on composition board  
61 x 91.5 cm  
Heide Museum of Modern Art  
Donated through the Australian  
Government's Cultural Gifts Program by  
Barbara Tucker 2015

---

**Albert Tucker**

born 1914 Melbourne;  
died 1999 Melbourne

---



*(Self Portrait)* c.1939  
oil on canvas  
34 x 22.5 cm  
Heide Museum of Modern Art  
Albert Tucker Archive Gift of Barbara  
Tucker 2011

---



*Malvern Street* 1938  
oil on paperboard  
50.5 x 45.5 cm  
Heide Museum of Modern Art  
Gift of Barbara Tucker 2009

---



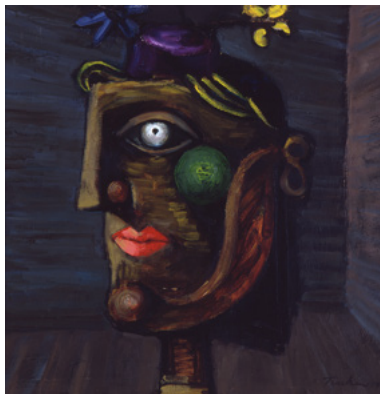
*Luna Park* 1945  
oil on composition board  
53 x 81 cm  
Heide Museum of Modern Art  
Gift of Barbara Tucker 2005

---



*Image of Modern Evil 31* 1947  
oil on composition board  
50.5 x 37.5 cm  
Heide Museum of Modern Art  
Gift of Barbara Tucker 2005

---



*Girl* 1949  
oil on plywood  
46.1 x 45.6 cm  
Heide Museum of Modern Art  
On long-term loan from the Albert &  
Barbara Tucker Foundation

---



*Lover and Dog* 1949  
oil on canvas on composition board  
73.2 x 61 cm  
Heide Museum of Modern Art  
On long-term loan from the Albert &  
Barbara Tucker Foundation

---



*Bus Stop* 1954  
oil on composition board  
62 x 81 cm  
Heide Museum of Modern Art  
Gift of the Albert and Barbara Tucker  
Foundation 2017

---



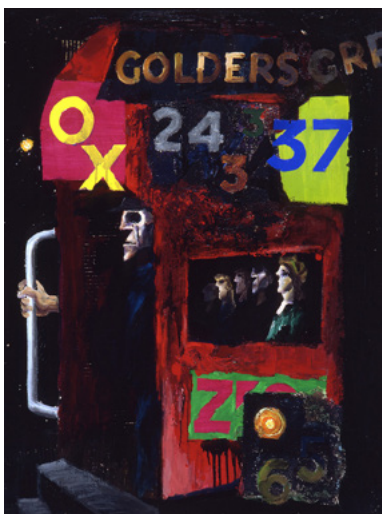
*Encounter* 1955  
oil on composition board  
94.4 x 129 cm  
Heide Museum of Modern Art On  
long-term loan from the Albert &  
Barbara Tucker Foundation

---





*King Kelly and His Legions* 1957  
oil, PVA, foil collage and cardboard on  
composition board  
96.2 x 130 cm  
Heide Museum of Modern Art  
Gift of Barbara Tucker 2009



*London Bus* 1957  
oil on composition board  
122 x 92 cm  
Heide Museum of Modern Art  
On long-term loan from the Albert &  
Barbara Tucker Foundation



*Explorer III* 1958  
synthetic polymer paint and PVA on  
composition board  
203 x 81.5 cm  
Heide Museum of Modern Art  
Gift of Barbara Tucker 2005



*Explorer and Parrot* 1963  
oil on composition board  
89 x 120.5 cm  
Heide Museum of Modern Art  
On long-term loan from the Albert &  
Barbara Tucker Foundation



*Barbara Tucker in the Banana Shed, Springbrook, Queensland* c.1970  
gelatin silver photograph  
30.5 x 40.7 cm  
Heide Museum of Modern Art  
Gift of Barbara Tucker 2001



*Night Image* 1973  
oil on composition board  
56 x 71 cm  
Heide Museum of Modern Art  
Gift of Barbara Tucker 2014

## Unknown



*Mask Sepik River, Papua New Guinea*  
collected 1969 c.1945–60  
wood and natural pigments, with cane  
hanging apparatus  
39 x 32.3 cm  
Heide Museum of Modern Art  
On long-term loan from the Albert &  
Barbara Tucker Foundation

## Unknown



*Mask Sepik River, Papua New Guinea*  
collected 1969 c.1945–60  
wood, natural pigments and  
cowrie shells  
56.5 x 30.3 cm  
Heide Museum of Modern Art  
On long-term loan from the Albert &  
Barbara Tucker Foundation

## Unknown



*Spirit figure Sepik River, Papua New Guinea*  
collected 1969 c.1970s–80s  
wood and natural pigments  
131 x 33.5 cm  
Heide Museum of Modern Art  
On long-term loan from the Albert &  
Barbara Tucker Foundation

## Danila Vassilieff

born 1897 Kagalnitskaya, Russian Empire; arrived 1923 Australia; lived 1929–34 South America, West Indies, United Kingdom; returned 1935 Australia; died 1958 Melbourne.



*Fitzroy Girls* 1937  
oil on canvas on composition board  
56 x 47.5 cm  
Heide Museum of Modern Art  
Gift of Barbara Tucker 2014



*Ambrose, Helen, Bert and Joy* 1941  
oil, charcoal and pencil on canvas on  
composition board  
55.5 x 60.2 cm  
Heide Museum of Modern Art  
On long-term loan from the Albert &  
Barbara Tucker Foundation