

Albert Tucker: Marking the Past

29 February to 16 August 2020
Albert & Barbara Tucker Gallery
Curator: Lili Belle Birchall

HEIDE
MUSEUM
OF MODERN
ART



In 1952 Albert Tucker travelled to Italy and embarked on a new chapter in his artistic practice. He had left Australia for Europe in 1947, however, it was only after he settled in the quaint seaside town of Noli on the Italian Riviera that he moved away from the expressive urban imagery that had dominated his work throughout the 1940s and early 1950s. Inspired by early Christian and Renaissance art he began to paint biblical narratives about resurrection, rebirth and overcoming adversity. Years later Tucker realised he had subconsciously linked the wounded figures of Christ, martyrs and saints that he observed in Italian churches to memories of his time documenting injured and traumatised soldiers in the plastic surgery ward at Heidelberg Military Hospital during World War II.

Tucker's Italian period was a time of self-discovery and regeneration. His exploration of the spiritual, physical and psychological wounds of the human condition led him to reflect on the rugged Australian landscape, and lay the foundations of his now iconic Explorers and Antipodean Head series. Building up figures with a sense of the texture and cracks of the eroded landscape, he aspired to create an archetype that was both human and Christ-like. Through this process, Tucker observed he was 'unloading the demons', and creating personal metaphors for fortitude and sorrow. This is an underlying theme of *Marking the Past*, which brings together and draws connections between four distinct but related bodies of Tucker's work.

Albert Tucker
Mourning Disciples 1955
oil on composition board
78.5 x 127 cm
Heide Museum of Modern Art
Donated through the Australian Cultural
Gifts Program by Barbara Tucker 2015
Courtesy of Smith & Singer Fine Art
© Albert & Barbara Tucker Foundation

Supported by

Tucker
ALBERT & BARBARA
TUCKER FOUNDATION

List of works

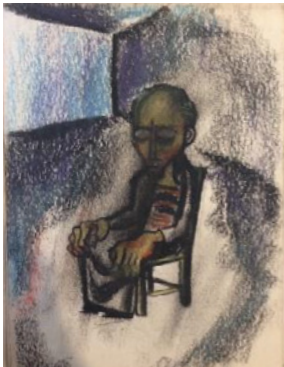
This catalogue is arranged alphabetically by artist then chronologically.
Measurements are height before width before depth.

Albert Tucker

born 1914 Melbourne;
died 1999 Melbourne



Untitled (Head study) c.1942
pastel on paper
Albert Tucker Archive Gift of Barbara
Tucker 2011



Untitled (Figure in chair) c.1942
paster and charcoal on paper
Albert Tucker Archive Gift of Barbara
Tucker 2011



Untitled (Hospital scene) c.1942
brush, ink and pencil on paper
Albert Tucker Archive Gift of Barbara
Tucker 2011



*Untitled (Study for painting Death of
an Aviator)* c.1942
pencil on paper
Albert Tucker Archive Gift of Barbara
Tucker 2011



Untitled (Sleeping soldier) c.1942
pen, ink and pencil on paper
Albert Tucker Archive Gift of Barbara
Tucker 2011



Untitled (Man in uniform) c.1942
pen, ink and gouache on paper
Albert Tucker Archive Gift of Barbara
Tucker 2011



*Untitled (Study for painting The
Prisoner)* c.1942
pencil on paper
Albert Tucker Archive Gift of Barbara
Tucker 2011



Untitled (Man in profile) c.1942
pencil on paper
Albert Tucker Archive Gift of Barbara
Tucker 2011



Emaciated Head (Untitled Head)
1943
pastel on paper
13.5 x 17.6 cm
On long-term loan from the Albert &
Barbara Tucker Foundation



Betrayal 1952
oil on composition board
61 x 136 cm cm
Private collection, Melbourne



Attack of the Beast
1953-1955-1986
oil on canvas
100 x 73 cm
Private collection, Sydney



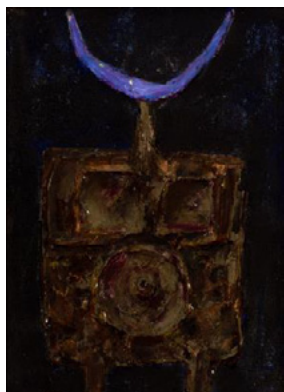
Absalom 1953
oil on board
55 x 70 cm
Private collection, courtesy of Smith & Singer Fine Art



Job 1953
oil on board
70 x 55.5 cm
Donated through the Australian Government's Cultural Gifts Program by Barbara Tucker 2015



Entombment 1954
oil on composition board
63 x 93 cm
Albert & Barbara Tucker Foundation, Melbourne



Ikon 1954
PVA on composition board
35 x 25 cm
On long-term loan from the Albert & Barbara Tucker Foundation



Wounded Man 1955
oil on composition board
81 x 61 cm
Private collection, courtesy of Smith & Singer Fine Art



Mourning Disciples 1955
oil on composition board
78.5 x 127 cm
Donated through the Australian Government's Cultural Gifts Program by Barbara Tucker 2015



Ayers Rock (previously titled *Wounded Mountain*) 1955
oil on composition board
66 x 131 cm
Gift of Barbara Tucker 2008



Wounded Landscape 1958
synthetic polymer paint on
composition board
90 x 121 cm
Albert & Barbara Tucker Foundation,
Melbourne



Surrender 1958
oil on canvas
76.5 x 45 cm
Albert & Barbara Tucker Foundation,
Melbourne



Figure 1958
oil, sand and PVA on composition
board
129 x 95 cm
Albert & Barbara Tucker Foundation,
Melbourne



Wounded Man 1958
synthetic polymer paint and cement
on composition board
91.5 x 122 cm
Courtesy of Gould Creative,
Melbourne



Armoured Bushranger 1958
synthetic polymer paint and PVA on
composition board
122 x 91.5 cm
Bequest of John and Sunday Reed
1982



Cratered Head 1958-1960
synthetic polymer paint on
composition board
122 x 101 cm
Gift of the Albert & Barbara Tucker
Foundation 2019



Lunar Landscape 1959
synthetic polymer paint on
composition board
101 x 123 cm
Albert & Barbara Tucker Foundation,
Melbourne



Surrender at Glenrowan 1959
synthetic polymer paint, PVA and oil
on canvas
156 x 122 cm
Gift of Barbara Tucker 2005



Explorer 1987
synthetic polymer paint on
composition board
91 x 91 cm
Albert & Barbara Tucker Foundation,
Melbourne
