

## After Dark: Nocturnes from the Heide Collection

3 March to 26 August 2018  
Albert and Barbara Tucker Gallery  
Curator: Kendrah Morgan

**HEIDE**  
**MUSEUM**  
**OF MODERN**  
**ART**



*Bus Stop* 1954  
oil on composition board  
62 x 81 cm  
Gift of the Albert and Barbara Tucker  
Foundation 2017

This exhibition takes its inspiration from Albert Tucker's night images, the earliest of which recorded the mysterious lighting effects of Melbourne's wartime 'brown-out' in the 1940s and the clandestine activities that Tucker witnessed after dark on the city's shadowy streets. Nocturnal imagery took hold in his imagination and he returned to it at different points throughout his career, often creating unsettling scenes redolent with a sense of impending menace.

The term nocturne was originally ascribed to melancholic musical compositions and first used in relation to art by the nineteenth-century American painter James McNeill Whistler, as a title for his evocations of night or twilight. The selection of nocturnes on display here reveals a range of conceptual and aesthetic possibilities within the theme: from Tucker's surreal encounters on lamp-lit streets to poetic reflections of moonlight on water, abstracted studies of the cosmos, nightmarish faces emerging from shadow, intimate embraces in the fading day, and sublime apocalyptic visions.

Darkness, often pierced by light, is used in many of the works as a metaphor for diverse aspects of the human condition—including fear, loneliness, solitude, serenity and wonder. In Charles Blackman's monumental *Face*, 1956, for example, the encroaching shadows suggest the loss of sight and attendant alienation suffered by his wife Barbara. Conversely, Blackman's ghostly depiction of Sunday Reed in her moonlit garden has a sense of self-imposed introspection and seclusion. In Kathy Cavaliere's *Untitled Home*, 2007/2016 the dark setting alludes to the dimness of daily existence, against which a jumble of plastic rubbish bags, lit from within as by magic, appears as an object of unexpected beauty.

# List of works

This catalogue is arranged alphabetically by artist then chronologically. Measurements are height before width before depth.

## Yosl Bergner

born 1920 Vienna; arrived 1937 Australia;  
Israel from 1950; died 2017 Tel Aviv



*(Man and Woman)* 1942  
oil on composition board  
59.5 x 43.5 cm  
On long-term loan from the Albert &  
Barbara Tucker Foundation

## Asher Bilu

born 1936 Tel-Aviv, Mandatory Palestine;  
arrived 1956 Australia



*Abstract II* 1962  
aquatint  
image 38.5 x 34.5 cm; sheet 56 x 38 cm  
Bequest of John and Sunday Reed 1982

## Charles Blackman

born 1928 Sydney; died 2018 Sydney



*The Birthday* 1953  
enamel on muslin on composition board  
62 x 74.5 cm  
Bequest of Barrett Reid 2000



*Face* 1959  
oil on composition board  
121.5 x 91.5 cm  
Gift of the Trustees of the Museum of  
Modern Art and Design of Australia, to  
the National Gallery of Victoria 1981.  
Transferred to Heide Museum of Modern  
Art by the Council of Trustees of the  
National Gallery of Victoria 2005.



*Night Fishing* 1987  
watercolour on paper  
45.8 x 61 cm  
Gift of Charles Blackman 1988



*Sunday in the Moonlight* 1990  
synthetic polymer paint on canvas  
119.5 x 109 cm  
Gift of Charles Blackman 1990

## Peter Booth

born 1940 Sheffield, England; arrived  
1958 Australia



*Untitled* c.1978  
pastel on paper  
55.3 x 74.8 cm  
Gift of Rae Rothfield 1998

**Peter Booth**

born 1940 Sheffield, England; arrived  
1958 Australia

---



*Untitled* 1986  
charcoal on paper  
75 x 105.5 cm  
Purchased 1986

---

**Katthy Cavaliere**

born 1972 Sarteano, Tuscany, Italy;  
arrived 1976 Australia; died 2012 Sydney

---



*untitled home* 2007, 2016  
chromogenic colour print on silver based  
metallic paper  
44 x 65.5 cm  
Gift of the Estate of Katthy Cavaliere  
2017

---

**Joy Hester**

born 1920 Melbourne; died 1960  
Melbourne

---



*From an Incredible Night Dream* c.1946  
brush and ink, wash and gouache on  
paper  
25.1 x 31.5 cm  
Gift of Barrett Reid 1990

---

**Laurence Hope**

born 1927 Sydney, died 2016

---



*City People* 1955  
oil and wash on paper  
25.4 x 19.5 cm  
Bequest of John and Sunday Reed 1982

---

**Carol Jerrems**

born 1949 Melbourne; died 1980 Sydney

---



*Boys* 1973, 2010,  
gelatin silver photograph  
50.5 x 40.6 cm  
From a portfolio of five photographs  
published by Heide Museum of Modern  
Art, Melbourne, in 2010 with the kind  
permission of Ken Jerrems and the  
Estate of Lance Jerrems [Linda Sly].

---



*Night Sky Southern Cross*, from the series  
*Violence to Non-violence, Prints from the  
Peace Project* 1988-1993  
screenprint  
image 61 x 80 cm; sheet 61 x 80 cm  
Gift of William Kelly 1994

---

**Erica McGilchrist**

born 1926 Mt Gambier, South Australia;  
died 2014 Melbourne

---



*Bush Track at Night* 1952  
pen and ink and wash on paper  
36.5 x 27 cm  
Gift of Erica McGilchrist 1999

---

**Erica McGilchrist**

born 1926 Mt Gambier, South Australia;  
died 2014 Melbourne

---



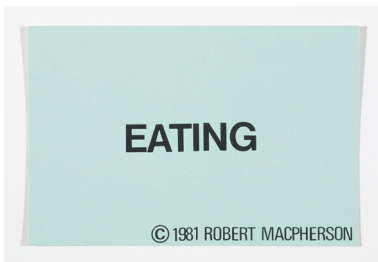
*Midnight Argument* 1954  
lithograph  
35 x 25 cm  
Gift of Erica McGilchrist 1999

---

**Robert MacPherson**

born 1937 Brisbane

---



*Eating, Sleeping, Lying, Sitting, Standing,  
Walking, Running, Laughing, Weeping,  
Breathing, Procreating Copyright Series*  
1981  
offset lithograph on card  
11 parts: each 10.3 x 15.3 cm  
Gift of Robert MacPherson 2011

---

**Sidney Nolan**

born 1917 Melbourne; died 1992 London,  
United Kingdom

---



*Abstract* c.1940  
enamel and wash on cardboard  
21.2 x 29.1 cm  
Bequest of John and Sunday Reed 1982

---



*Moon Boy* 1940  
alkyd on velvet on composition board  
55 x 57.5 cm  
Bequest of Barrett Reid 2000

---



*St Kilda II* 1940  
oil, enamel and pencil on paper  
35.5 x 43 cm  
Bequest of John and Sunday Reed 1982

---

**John Perceval**

born 1923 Bruce Rock, Western  
Australia; died 2000 Melbourne

---



*Suburban Roofs at Night* 1944  
oil on muslin on cardboard  
63.4 x 75.5 cm  
Purchased from John and Sunday Reed  
1980

---

**Kathy Temin**

born 1968 Sydney

---



*Speechless* 1998  
felt on stretcher with Perspex bowl  
47.0 x 47.0 x 24.0 cm  
Donated through the Australian  
Government's Cultural Gifts Program by  
Lion Capital Pty Ltd 2010

---

**Albert Tucker**

born 1914 Melbourne; died 1999  
Melbourne

---



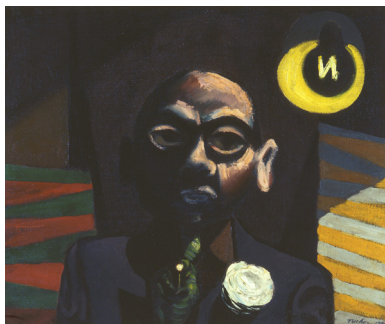
*Luna Park* 1945  
oil on composition board  
53 x 81 cm  
Gift of Barbara Tucker 2005

---



*Tivoli Clown* 1945  
oil on composition board  
61 x 45.5 cm  
Gift of Barbara Tucker 2005

---



*Vaudevillian* 1946  
oil on muslin on cardboard  
67 x 78.5 cm  
Bequest of John and Sunday Reed 1982

---



*Woman Rue St Denis I* 1950  
synthetic polymer paint, brush and ink  
on paper  
52 x 37 cm  
On long-term loan from the Albert &  
Barbara Tucker Foundation

---



*Bus Stop* 1954  
oil on composition board  
62 x 81 cm  
Gift of the Albert and Barbara Tucker  
Foundation 2017

---



*Killing* 1954  
oil on composition board  
81 x 62 cm  
On long-term loan from the Albert &  
Barbara Tucker Foundation

---



*At the End of My Street* 1989  
synthetic polymer paint on paper  
43.5 x 54.5 cm  
On long-term loan from the Albert &  
Barbara Tucker Foundation

---

**Danila Vassilieff**

born 1897 Kagalnitskaya, Russian Empire; arrived 1923 Australia; lived 1929-34 South America, West Indies, United Kingdom; returned 1935 Australia; died 1958 Melbourne

---



*Three Girls on the Street - a Nocturne*  
1948  
oil on composition board  
44.5 x 37.3 cm  
On long-term loan from the Albert & Barbara Tucker Foundation

---

**Lorri Whiting**

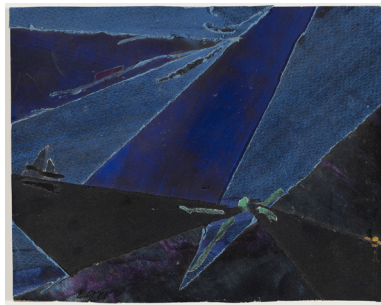
born 1927 Melbourne; Italy from 1955

---



*Sea by Night* 1993  
collage of synthetic polymer paint on paper on board  
26 x 43 cm  
Gift of Lorri Whiting 1995

---



*Sea by Night: Green Flashing Light* 1993  
collage of synthetic polymer paint on paper on board  
22 x 28 cm  
Gift of Lorri Whiting 1995

---