

HEIDE MUSEUM OF MODERN ART
2003 ANNUAL REPORT

Heide
Museum of
Modern Art
Heide



		PAGE
1	Mission	3
2	Patrons, Fellows, Board of Directors and Company Members	4
3	Chairman's Report	5
4	Operations Report	6
5	Exhibitions and Events	11
6	Acquisitions	13
7	Outward Loans	15
8	Lenders	16
9	Donors and Partners	17
10	Staff and Volunteers	21
11	Financial Statements	23



Heide Museum of Modern Art tells the story of modern art in Australia through the heritage of John and Sunday Reed and the unique environment in which they lived. The Museum maintains their philosophy of support for contemporary art.



FOUNDING PATRON

Sir Rupert Hamer AC KCMG, 1916 – 2004

PATRON

Mrs Terry Bracks

FELLOWS

Dr H Norman B Wettenhall AM, 1915 – 2000	1988
Georges Mora, 1913 – 1992	1989
Maria Prendergast	1990
Baillieu Myer AC	1992
Loti Smorgon AO	1993
Victor Smorgon AO	1993
Dr Barrett Reid AM, 1926 – 1995	1994
Dr Tom Quirk	1995
Maudie Palmer	1997
The Hon. Mr Justice Charles	1998
Christine Collingwood	1999
Albert Tucker AO, 1914 – 1999	2000
Barbara Tucker	2000
Tom Lowenstein	2002

BOARD OF DIRECTORS

Trevor Tappenden Chairman
Kerry Gardner Deputy Chairman
Dr Janine Burke
Craig Kimberley (from December)
Bryce Menzies
Ken Ryan (from December)
David Walsh

Rob Adams (to March)
James Colquhoun (to October)
Michael Roux (to March)

COMPANY MEMBERS

Helen Alter
Ken Cato
The Hon. Mr Justice Charles
Joan Clemenger
Christine Collingwood
Patricia Cross
Janne Faulkner AM
Jeff Floyd
Julia King
Tom Lowenstein
Professor Ray Martin
Sarah McKay
Ian McRae
Dr Thomas Quirk
Rosemary Simpson
Deryk Stephens
Chris Thomas

CHAIRMAN'S REPORT

During 2003 Heide underwent significant transition to re-emerge as a major art destination. This was a year full of challenge, change and excitement highlighted by:

- the appointment of Lesley Alway as Director in August
- confirmation of the New Development with revised plans for a new gallery space, retail shop, art storage, and car park
- revision of the plans for the new Education Centre, now to be expanded
- achieving critical acclaim for our exhibitions
- extraordinary dedication and commitment from our staff and volunteers, to embrace these changes and look to the future

At the time of this report we are commencing the calling of tenders for the new Education Centre/Office accommodation, which are due to be completed by late 2004. We are also finalizing the revised plans for the New Development and expect to start work on the car-park by December this year, with completion of the entire development by the end of 2005.

In addition to these significant achievements our financial performance has also improved. The surplus for the year from ordinary activities is \$536,820 compared with a deficit in the prior year of \$205,447. However, we recorded an operating deficit of \$252,825 compared to a deficit of \$803,064 from the previous year.

There are a number of reasons for this improvement with increased Government funding being a significant component. We gratefully acknowledge this support from all levels of Government which imposes on us a tremendous responsibility to the people of Victoria, and all visitors, to provide access to a cultural experience of the highest standards.

Whilst Heide will report total assets of over \$32 million the cost of maintaining our works of art and property and equipment, as well as providing world-class exhibitions, is ever increasing. Revenue and support from non-government sources must be continually

increased to ensure we can continue to operate to the high standards we seek and which are now expected by the visiting public.

Support from the public, our sponsors and partners, donors, and from the Members of Heide, has been outstanding, reflecting our overall improved performance and the restoring of confidence with our stakeholders. We look forward to this ongoing support and the Board and staff of Heide are committed to ensuring Heide performs as a world class museum.

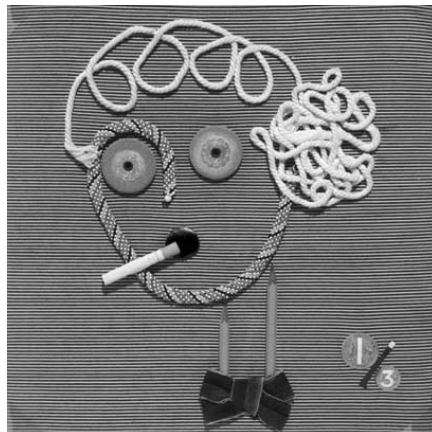
On behalf of the Board I would like to acknowledge the contribution of Warwick Reeder, during his seven years as Director of Heide. I also acknowledge our former Founding Patron, Sir Rupert Hamer, who recently passed away. He was the instigator of Heide as a public museum and we are truly grateful for his foresight and vision.

This has been a demanding year for your Board and I thank them for their dedication and commitment to Heide. I look forward to their contribution and that of our new directors, as we embark upon another busy and exciting year. I would also like to acknowledge the substantial contributions of Board members who resigned during 2003: Rob Adams served for six years and James Colquhoun and Michael Roux served for 4 years.

None of this would be possible without our staff. They have performed in an extraordinary fashion to deliver some outstanding exhibitions. Special recognition is made of our Senior Curator Zara Stanhope for her creativity and courage to push the boundaries of Heide's mission, and deliver a challenging and entertaining program of exhibitions.

With the leadership of our new Director Lesley Alway, I am confident our exhibition program and the overall performance of Heide will continue to succeed in all ways.

T W Tappenden
Chairman



Douglas Annand *The Typist*. Cover design for *The Home*, vol 17, no.7, July 1936 1936

collage of rope, beads, pencils, ribbon, cigarette, erasers, coloured paper, matchstick, cut photographs on fabric mounted on card

33.4 x 31.6 cm

National Gallery of Australia

OPERATIONS REPORT

OVERVIEW

It gives me a great deal of pleasure to report on Heide's program for 2003. I have enjoyed a very warm welcome since I joined Heide in August 2003 and would like to acknowledge the support of the highly professional and enthusiastic staff and Board of Directors, particularly the Chairman Mr Trevor Tappenden. Heide is pleased to be part of the reinvigoration of Victoria's cultural infrastructure that has occurred in Melbourne as well as regional and metropolitan areas. The Museum will maintain its role as one of Victoria's major galleries, offering a unique experience of landscape, art and architecture.

Lesley Alway
Director

EXHIBITIONS AND EVENTS

The main exhibition space, Heide III, hosted four major exhibitions during 2003:

Douglas Annand: The art of life, A National Gallery of Australia Travelling Exhibition, from 15 February to 9 June which showcased one of Australia's most prolific but lesser known graphic artists of the 1930s-50s, Douglas Annand.

SUBLIME 25 Years of the Wesfarmers Collection of Australian Art from 21 June to 28 September, featuring works from one of the nation's most extensive corporate collections of Australian art.

This was the future... Australian Sculpture of the 1950s, 60s, 70s & today from 4 October to 7 December, the highly acclaimed exhibition curated by Heide's Senior Curator, Zara Stanhope.

Australian Surrealism The Agapitos/Wilson Collection An Art Gallery of South Australia Travelling Exhibition, opened on 16 December and continues through to 28 March 2004.

Visitation to *Australian Surrealism* exceeded budget by 30%, demonstrating not only the integrity and quality of the show, but also the success of the highly coordinated marketing campaign developed to promote the exhibition.

In Heide II, the award winning 'gallery for living' built for the Reeds in 1964-7, also had a very busy schedule with some notable and some very successful shows of emerging artists. These included *Soft Steel - eX de Medici*, featuring work by the Canberra based artist, and exhibited as part of the 2003 L'Oréal Melbourne Fashion Festival Arts Program. This was followed by a survey of recent work by Linde Ivimey, entitled *Close to the Bone, Linde Ivimey, Sculpture*, comprising sculptures created from materials such as chicken bones. This exhibition curated by Kelly Gellatly developed a high level of interest through word of mouth and street press. Likewise, *I heard it on the grapevine...* profiled the work of six young artists previously exhibited in artist-run-spaces, so for most of these artists it was their first "public gallery" exhibition. Contemporary sculpture also featured in Heide II during October and November as part of the major Australian sculpture survey *This was the future...* Exhibitions such as these which profile young artists to a broader audience are entirely consistent with the philosophy of Heide's benefactors, John and Sunday Reed who were committed to the support and development of contemporary Australian art and design.

OPERATIONS REPORT continued

The final exhibition in Heide II was *Judging Architecture: Issues, Visions and Triumphs: Victorian Architecture Awards 1929-2003*. This exhibition was generated from the Royal Australian Institute of Architects' review of the last 75 years of Victorian architecture awards and a reassessment of the 'best' buildings. It features both documentation of the original photographs of selected buildings as well as the rephotographing of each site by Australia's most noted architectural photographer, John Gollings. This show has generated wide media and public interest. The People's Choice Award is generating strong public interest and will be announced in February 2004.

The restored Heide I continues to generate strong interest amongst our visitors. In the first half of 2003 this gallery was the site for three shows, *Moments of Mind: the Sweeney Reed Collection* in conjunction with *PLANS: A Sculptural Situation* by Gail Hastings. In July, Heide I showed *Neil Douglas: An Artist In Nature's Garden* which featured paintings and ceramic ware by Heide's original gardener. Sadly Neil passed away shortly after the exhibition closed in late October, but we were pleased that he had been able to attend the opening surrounded by family and friends. This exhibition was displayed concurrently with *A Tribute to Hal Hattam*, a collector, patron and artist in his own right associated with the Reed Circle that was opened by Patrick McCaughey. In response to visitor interest in understanding more about the role of Heide and the Reeds in Australian art, a new exhibition, *Art and Life at Heide* followed. This profiles key works from Heide's permanent collection and highlights the role of the Reeds and their circle in the development of Australian modernism, including Nolan's Ned Kelly series and the Angry Penguins.

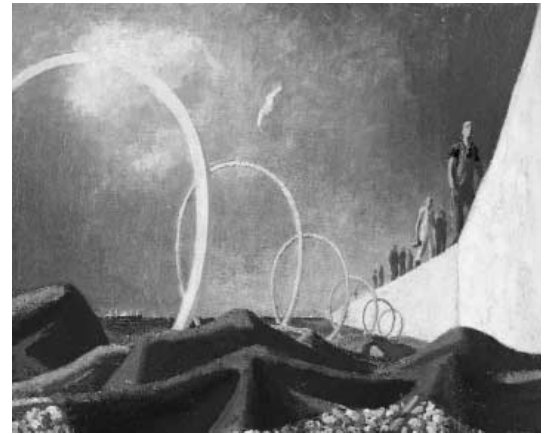
In addition to its core exhibition program Heide also ran a spring garden festival during October, *Growgrowing Heide*, a range of public and education programs for both students and adults.

Heide progressed its redevelopment plans for both a new Education / Administration Centre and improvements to the visitor and exhibition facilities in Heide III. It is expected that building work will progress during 2004 and 2005 to be finalised in time for a major exhibition Heide is planning to coincide with the Commonwealth Games in March 2006.

Total visitation to Heide's galleries in 2003 was 49,302, with an estimated additional 15,000 grounds-only visitors. On a monthly average basis Heide's visitation trend improved through 2003 compared to the preceding year.

Jeffrey Smart *Kurnell* 1955
oil on board
28.5 x 73.5 cm

Courtesy of The Wesfarmers Collection, Perth



OPERATIONS REPORT continued

COLLECTION

Heide's Collection policy was reviewed and ratified in 2003 as the principal reference point for the Board and management in the on-going shaping of the Museum's Collection.

Acquisitions in 2003 included the Caroline Williams work *Horse Listening to a Landscape* c 1985, gifted to Heide by Maudie Palmer and Judy Walsh to commemorate Heide's 21st year. Alun Leach-Jones' gift of Sweeney Reed letters and poems also particularly highlight the fact that Heide manages a growing archive of historical material.

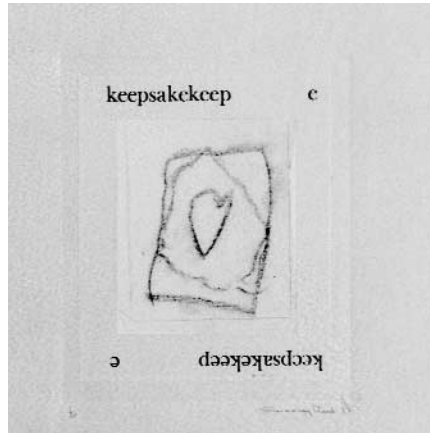
A highlight was the culmination of the major Collection Digitisation program undertaken through the support of the Ian Potter Foundation via its Art Museum Collections Accessibility Initiative (AMCAI). This complex project was begun in 2001 and progressively achieved digitisation of the Museum's Collection, celebrated in September with the launch by Heide's Patron, Mrs Terry Bracks, of a CD-ROM of Collection Highlights. The AMCAI project concurrently supported the Museum's community outreach program which established the basis for ongoing programming for specific parts of the regional community.

EDUCATION AND PUBLIC PROGRAMS

Heide's Education and Public Programs presented a wide range of tailored and inventive events and learning opportunities, responding to a diverse cross-section of the local and regional community. In addition, the Museum maintained its regular programming of guided tours and weekly focus talks through its committed and professional Volunteer Guides corps.

Manningham City Council continued its support for the Museum's community program and many of the programs built on relationships with community groups also developed through the Ian Potter Foundation's Art Museum Collections Accessibility Initiative triennial grant. *Creative Spaces*, presented in April, was a notable example of the strength of this approach, with Heide, the Melbourne Symphony Orchestra and Manningham Park Primary School collaborating to create and produce a musical performance based on the children's responses to Heide and Nolan's Ned Kelly series.

The education program attracted strong responses from all levels of the formal education sector, with a new program based on teaching the art of philosophical enquiry instigated, through a new partnership with the Department of Education Employment and Training.



Sweeney Reed *Keepsake* 1977
lithograph and letterpress on paper
12.0 x 10.0 cm
Heide Museum of Modern Art Collection
Gift of Pamela, Mishka and Danilla McIntosh, 1990

OPERATIONS REPORT continued

PARKS AND GARDENS

Heide's Park and Gardens are undeniably key features of Heide's heritage and visitor attraction and have continued to provide a beautiful setting for visitors and functions over the year.

With the continuing drought, water restrictions and other resource constraints, attention has been focused on sustaining the Kitchen Gardens, particularly in the recently established Heide I Vegetable Garden. Intensive work allowed the gardens to feature for major events such as the inaugural *Growingrowing Heide*. However a program of major cyclical renovation over the next three years is being developed to allow the Park's special environment and feature gardens to be sustained.

The 'once in a hundred years' storm that hit north-east Melbourne in December also caused significant erosion damage to most paths and tracks and the Heide II Kitchen Garden.

MARKETING AND DEVELOPMENT

Annual Partnerships were significantly strengthened as part of this overall strategy through the review of the partnership framework which introduced a new category, Education & Public Programs Partners. This new category encompassed Manningham City Council and new partners, the Department of Education & Training. Arts Victoria increased its commitment to Heide with the announcement of \$650,000 per annum as a triennial funding agreement. The State Government also provided project specific support through its Indemnification Scheme for *Douglas Annand: The art of life* and *SUBLIME 25 Years of the Wesfarmers Collection of Australian Art*. Domaine Chandon continued its support as a Principal Partner.

Industry Partners Gollings Pidgeon commenced in July 2003 and enabled Heide to develop a more cohesive and comprehensive identity including an update of Heide's brand and the production of new print materials. Damm Fine Food became a new Industry Partner mid-year replacing Blake's Feast, in a joint partnership for the re-launch of the restaurant, now known as Heide Café. This relationship has allowed for flexibility in the use of the venue and for a close alignment of the Café's profile and operations with those of the Museum. Continuing Industry Partner, Web Prophets, contributed to the highly successful evolution of the Heide website in December. Other continuing Industry Partners included Aalto Colour, John Brash Fotograffi, Christie's Australia Pty Ltd and Image Online. A special thanks to Ron Butters (design) who has been a long term supplier of Heide, until mid year.

OPERATIONS REPORT continued

In 2003, Heide developed a centralised communications strategy, with new marketing collateral focusing on the promotion of individual exhibitions and, more broadly, identifying Heide as a cultural destination. The resulting highly co-ordinated marketing campaigns included wider brochure distribution beyond key partners, arts organisations and local facilities, to street distribution in cafés, shops, cinemas and other retail outlets throughout inner Melbourne and the local vicinity. Heide's on-site signage was also updated, integrating directional information with snapshots of Heide history.

Another major development in Heide's marketing campaign was the website redesign by our continuing Industry Partner, Web Prophets. Coming online at the beginning of December 2003 for the opening of the exhibition *Australian Surrealism, The Agapitos/ Wilson Collection*, preliminary figures for the new look website www.heide.com.au quickly demonstrated a marked increase in user traffic.

A new Heide Membership program was created in late 2003. This program has enabled a high level of servicing for members through our Visitor Service desks, as well as the more effective development and co-ordination of Membership events within Heide's existing Public Programs and communication campaigns. With an immediate response from many members of the Friends of Heide, which wound up in November, and also new members, membership was 600 strong by the end of the year.

A first stage review of Heide admission prices was undertaken in mid-2003, resulting in the introduction of a Public Programs ticket offer. This offer provided a customised package for visiting groups that incorporated gallery admission and light refreshments at Heide Café.

BUILDING PROGRAM

Phase I of the New Development was the restoration of Heide I, which opened in late 2001 and has subsequently won two major heritage awards, including the Royal Australian Institute of Architects Award for Heritage Conservation 2003.

Heide made strong progress with its further redevelopment plans, following the decision mid-year to direct the New Development in line with funding availability and a changing cultural environment with a number of facilities opened in Melbourne over the last couple of years. Phase II will be the construction of the new Sidney Myer Education Centre and administration wing during the second half of 2004 and Phase III will be the redevelopment of Heide III including the new Albert and Barbara Tucker Gallery, improved visitor amenities and collection storage as well as the construction of Federation Way to provide improved vehicle access and car parking. This will occur during 2005 with the redesigned gallery opening in March 2006 to coincide with the Commonwealth Games.

This building program has been made possible through the generous support of both government and philanthropic funds including the Victorian State Government through the Community Support Fund, the Commonwealth Government's Federation Fund and the Sidney Myer Fund.



EXHIBITIONS AND EVENTS

DURATION	EXHIBITION / SPECIAL EVENT	VENUE
Completed Exhibitions		
2 February – 6 April 2003	<i>Slow release: recent photography in New Zealand</i> A Heide Museum of Modern Art Travelling Exhibition	Adam Art Gallery, Victoria University Wellington, New Zealand
16 November 2002 – 23 February 2003	<i>Many Happy Returns: Celebrating Heide's 21st Birthday Year</i>	Heide II
7 December 2002 2 February 2003	<i>David Larwill: Stuff that Matters</i>	Heide III
25 January – 5 July 2003	<i>Moments of Mind, the Sweeney Reed Collection</i>	Heide I
25 January – 5 July 2003	<i>PLANS: A Sculptural Situation by Gail Hastings</i>	Heide I
15 February – 9 June 2003	<i>Douglas Annand: The art of life</i> A National Gallery of Australia Travelling Exhibition	Heide III Travelling Exhibition
1 March – 11 May 2003	<i>Soft Steel – eX de Medici</i>	Heide II
17 May – 10 August 2003	<i>Close to the Bone, Linde Ivimey, Sculpture</i>	Heide II
21 June – 28 September 2003	<i>SUBLIME 25 Years of the Wesfarmers Collection of Australian Art</i>	Heide III
12 July – 26 October 2003	<i>Neil Douglas: An Artist In Nature's Garden</i>	Heide I
12 July – 26 October 2003	<i>A Tribute to Hal Hattam</i>	Heide I
16 August – 28 September 2003	<i>I heard it on the grapevine... Melbourne's new art</i>	Heide II
4 October – 7 December 2003	<i>This was the future... Australian Sculpture of the 1950s, 60s, 70s & today</i>	Heide II, III & Sculpture Park

EXHIBITIONS AND EVENTS
continued

DURATION	EXHIBITION / SPECIAL EVENT	VENUE
Special Events		
15– 26 October 2003	<i>Growngrowing Heide</i> Outdoors at Heide	Heide Gardens & Sculpture Park
Continuing Exhibitions		
15 November 2003 – 31 December 2004	<i>Art and Life at Heide</i>	Heide I
29 November 2003 – 22 February 2004	<i>Judging Architecture: Issues, Visions and Triumphs Victorian Architecture Awards 1929 – 2003</i>	Heide II
16 December 2003 – 28 March 2004	<i>Australian Surrealism The Agapitos/Wilson Collection</i> An Art Gallery of South Australia Travelling Exhibition	Heide III

ACQUISITIONS

Heide Museum of Modern Art gratefully acknowledges the pro-bono assistance of valuers John Buckley, Walter Granek and Christie's Australia Pty Ltd.

Kevin CONNOR

Portrait of Sydney III 1970-71
oil on composition board
244.0 x 397.0 cm
Gift of Wilbow Corporation Pty Ltd through the Cultural Gifts Program 2003

Neil DOUGLAS

Untitled (Landscape) c. 1963-64
oil on composition board
68.5 x 91.5 cm
Purchased by the Heide Circle of Donors 2003

Jennifer JOSEPH

The Three Marks of Existence 2000-2001
synthetic polymer paint on wooden tea chest lids 13 panels, each 50 x 40 cm
Gift of the artist 2003

Alun LEACH-JONES

4 works
Gift of the artist 2003

(For Sweeney) 1977
screenprint on paper
sheet 65.1 x 57.2 cm; comp 45.7 x 43.7cm

Untitled (Green forms) 1977
screenprint on paper
sheet 65.4 x 57.1 cm; comp 45.7 x 43.8 cm

Untitled (Purple forms) 1977
(Illustration for Sightings "In that certain time of morning...")
screenprint on paper
sheet 64.7 x 56.9 cm; comp 45.6 x 43.5 cm

Untitled (Blue forms) 1977
screenprint on paper
sheet 65.7 x 56.9 cm; comp 45.7 x 43.7 cm

Sweeney REED

20 items

Gift of Alun Leach-Jones 2003

Publication: Reed, Sweeney and Leach-Jones, Alun, *Sightings*, Macquarie University 1977

Photocopy of front page of book, Jules Supervielle, *Selected Writings – New Directions*

Letter, Sweeney Reed to Alun Leach-Jones, Anzac Day 1977

Letter, 2 pages, Sweeney Reed to Alun Leach-Jones, "long weekend" 1977

Letter, Sweeney Reed to Alun Leach-Jones, 20 May 1977

Letter, Sweeney Reed to Alun Leach-Jones, 29 May 1977

Letter, 2 pages, Sweeney Reed to Alun Leach-Jones, 26 February 1979

Sweeney Reed, Typewritten poem, "The edge that lies..."

Sweeney Reed, Typewritten poem, "Sitting down to read you again..."

Sweeney Reed, Typewritten poems, pasted to A4 paper (with correction fluid), "The edge that lies"

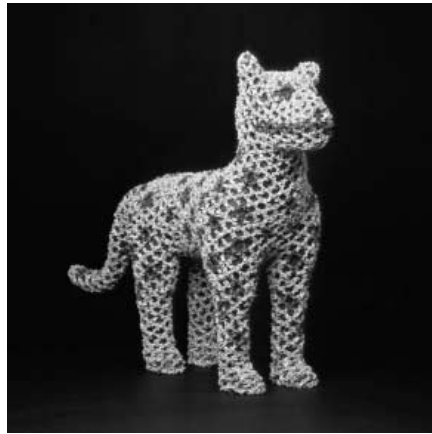
Sweeney Reed, Typewritten poem, "Location Sketch (1)"

Sweeney Reed, Typewritten poem, "Elsie's 17th Fix" 1966

Sweeney Reed, Typewritten poem, "The Fall of the Vauxhall Performer"

Sweeney Reed, Typewritten poem, "Location Sketch (II)" 1976

Sweeney Reed, Typewritten poem, "Barbarella"



Linde Ivimey *Leopard* 2002
chicken vertebrae, string, fibre, fabric, wood, steel armature
80.0 x 120.0 x 30.0 cm
Private Collection

ACQUISITIONS continued

Sweeney Reed, Typewritten and annotated poem, "Flowers" 1959-1975

Sweeney Reed, Photocopy of typewritten and annotated poem, "a bird..." June 1977

Sweeney Reed, Photocopy of typewritten poem, "Touch in Bloom" 1976

Sweeney Reed, Photocopy of typewritten poem, "The Fall of the Vauxhall Performer" 1976

Sweeney Reed, Photocopy of typewritten and signed poem, "Location Sketch" 1976

Peter TYNDALL

detail: A Person Looks At A Work Of Art/someone looks at something... LOGOS / HA HA 2003

inkjet print on card
29.6 x 21.0 cm
Gift of the artist 2003

Ron UPTON

Untitled 1965
monotype

54.7 x 37.0 cm
Purchased by the Heide Circle of Donors 2003 from the Estate of Maxwell Arthur Marginson

Ron UPTON

Standing figure (1964)

ciment fondu
224 x 111 x 100 cm
Gift of the artist 2003

Caroline WILLIAMS

Horse Listening to a Landscape c.1985

oil on canvas
120.0 x 150.0 cm
Gift of Maudie Palmer and Judy Walsh to commemorate Heide's 21st year.

OUTWARD LOANS

GLOBAL ARTS LINK

***When I Was Young:
Impressions of Childhood***
2 November 2002 – 9 February 2003

Charles BLACKMAN
The Shadow 1953
tempera on cardboard
59.0 x 75.0 cm
Purchased from John and Sunday Reed 1980

Charles BLACKMAN
Prone schoolgirl c. 1953
enamel on cardboard
79.0 x 93.5 cm
Purchased from John and Sunday Reed 1980

John PERCEVAL
Performing Dogs No.1 1943
oil on muslin on cardboard
37.6 x 67.8 cm
Purchased from John and Sunday Reed 1980

STATE LIBRARY OF VICTORIA
Kelly Culture: Reconstructing Ned Kelly
28 February – 25 May 2003

Sidney NOLAN
*Ned Kelly 'Nobody knows anything about my
case but myself'* 1945
enamel on cardboard
64.0 x 76.0 cm
Purchased with funds provided by the
Friends Heide and the Heide Circle
of Donors 1998

Albert TUCKER
King Kelly and his legions 1957
oil, P.V.A, collaged foil and cardboard
on composition board
On loan from Barbara Tucker 2000

Joy HESTER
Fun fair c. 1946
brush and ink, watercolour, coloured chalk,
pencil on paper
20.2 x 25.2 cm (comp & sheet)
On loan from Barbara Tucker 2000

RMIT GALLERY

***Sculpture at RMIT during the Jomantas
years 1961-1987***
11 July – 29 September 2003

George BALDESSIN
Personage, window and factory smoke 1966
synthetic enamel on cast and fabricated
aluminum
171.1 x 218.5 x 66.0 cm
On loan from Tess Baldessin

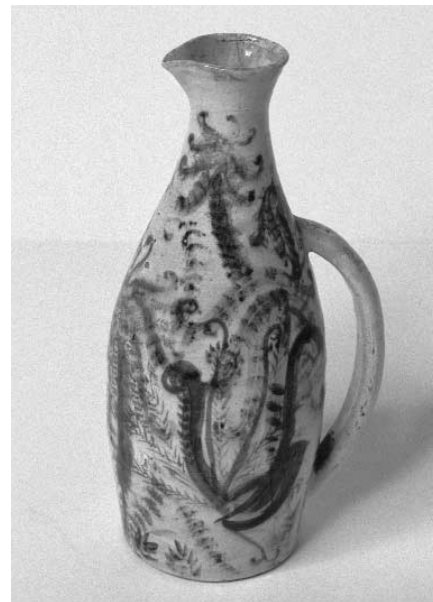
NATIONAL GALLERY OF VICTORIA,
THE IAN POTTER CENTRE,
FEDERATION SQUARE
Peter Booth Retrospective
28 November 2003 – 8 February 2004

Peter BOOTH
Painting 1986
oil on canvas
167.0 x 244.0 cm
Purchased 1987



2121 Furniture
Andrew Hazewinkel
Andrew Klippel
Anna Finlayson
Anna Schwartz Gallery
Ballarat Fine Art Gallery
Barbara Johnson
Barbara Tucker
Bert Flugelman
Bill Nuttall and Annette Reeves
Bonita Ely
Brendan and Sian Tolley
Carlier Makigawa
Charles Nodrum Gallery
Chris Bond
Christopher Langton
Cotham Gallery 101
Daminao Bertoli
Danius Kesminas
Darren Knight Gallery
Domenico de Clario
Drill Hall Gallery and Art Collection
Elizabeth Arthur Fine Art
Elizabeth Gibson
Elizabeth McFarland
Estate of George Baldessin
eX de Medici
Fabian Douglas
Gail Hastings
Gary Wilson
Geelong Art Gallery
Geoffrey and Virginia Hassall
Gollings Pidgeon
Gwen Ford
Ian Potter Museum of Art
Jack Waites
Jason Hartcup
Hindmarsh Shire Council
Joan Grounds
Joan McClelland
Jock Clutterbuck
John Krzywokulski
John Meade
Julia Gorman
June Brown
Karen Hallmark
Kashell Robertson-Swann
Katherine Hattam
Kate Hattam
Kevin Mortensen
Kyle Redpath
Latrobe Regional Gallery
Linde Ivimey
Lisa Young
Margaret Douglas
Mark Galea
Marr Grounds
Martin Hoare
Marvin Hurnall
McClelland Gallery and Sculpture Park
Michael Carr Art Dealer
Michael Kitching
Michelle Guglielmo
Mikala Dwyer
Mildura Arts Centre
Monash University Museum of Art
Mr and Mrs Colin Laverty
Mrs Jill O'Brien
Nadine Christensen and Andrea Blundell
Narinda Cook
National Gallery of Victoria
Neil Douglas
Nigel Lendon
Noel Hutchison
Noelene Lucas
Pamela, Mishka and Danila McIntosh
Paul Irving
Paul Knight
Penrith Regional Art Gallery and Lewers Bequest
Peter Cripps
Peter D Cole
Professor Emeritus Margaret Plant
Rae Rothfield
Ray Hughes
Ron Upton
Sanja Pahoki
Sarah Cottier Gallery
Shepparton Art Gallery
Sherman Galleries
Simeon Nelson
Sofitel Collection
Stonington Stables Museum of Art
Susan Dye
Sutton Gallery
Sydney Ball
Tess Baldessin
Tony Trembath
Valerie Albiston
Vlase Nikoleski
Victorian Arts Centre
Wollongong City Gallery Donors

Neil Douglas and Arthur, Boyd *Untitled (ceramic jug)* 1960
glazed ceramic
27.5 x 14.5 x 5.0 cm
Heide Museum of Modern Art Collection
Bequest of Barrett Reid, 2000
Reproduced with the permission of the Bundanon Trust



DONORS AND PARTNERS

Heide Museum of Modern Art acknowledges with gratitude all following contributors:

NEW DEVELOPMENT

Established in 2001 in support of fundraising for the New Development. Phase 1 was completed in December 2001 with the opening of the Heide 1 heritage house and garden restoration.

Government Supporters

Victorian State Government through the Community Support Fund

Commonwealth Government through the Federation Fund

Building Fund Donors

Adams Pest Control
Robert and Elizabeth Albert
Kate Bêchet
Becton Construction Group Nominees Pty Ltd
Christine and John Collingwood
J J and E R Colquhoun
Lorraine Carr
Stephen and Jenny Charles
Dr Andrew Churchyard
Joan and Peter Clemenger AM
Susan Crennan QC
Lauraine Diggins
Dr Ian and Mrs Marie Donald
Rose and John Downer AM
Denise Farran
John Fittock
Ken and Diana Fletcher
William J Forrest
Friends of Heide
Patricia Fullerton
Kerry Gardner
Richard and Isabella Green
Lesley and Peter Griffin
Neil and Angela Gunn

Anthony and Cathie Hancy
Craig and Connie Kimberley
Dr Richard and Mrs Andrea King
Elizabeth H Loftus
Jill McFarlane
Judith and John Middleton QC
Sidney Myer Fund
Maria and Allan Myers QC
Geraldine O'Sullivan
The Hon. Justice Pagone and Mrs Margaret Pagone
The Parncutt Family Foundation
Dr Ronald Robinson
Meredith Rogers
Ron Selkirk
Loti Smorgon AO
Victor Spitzer
Dr Diana Starr
Cheryl and Chris Thomas
Robyn and Ross Wilson
Sir John Young KCMG AC

KEN FLETCHER MEMORIAL FUND

A Memorial Fund established to commemorate the leadership of the late Ken Fletcher, Chairman of the Heide Board of Directors from 1997 to 2002. Funded by individual donors (not listed).

GRAEME STURGEON MEMORIAL TRUST

A privately funded Trust in support of the acquisition and exhibition of sculpture at Heide.

DONORS AND PARTNERS continued

CIRCLE OF DONORS

An annual program supporting the acquisition of artworks for the Museum's Collection.

Christopher Baker
Helen and Ken Barnes
Lucy Carruthers
Beverley and Alan Castleman
Ian and Marie Donald
Denise Farran
William J Forrest
David Freeman
John and Margaret Harrison
Diana Morgan
Edna Newton
Laurence O'Keefe
Caroline Phillips
Victoria Ponsford
Peter and Sally Redlich
Richard and Vivienne Reed
Ian Rogers
Rae Rothfield
Elizabeth Sevier
Gene Sherman
Peter and Noelle Thomas
Jeffrey Turnbull
Elisabeth Wagner
Caroline Walford
Ralph and Barbara Ward-Ambler AM
Sir John Young KCMG AC
Tom and Barb Yuncken

GEORGES MORA FOUNDATION

A Commemorative Fund that has supported various Museum initiatives and programs.

Founder Benefactors

National Australia Bank
William J Forrest
Loti and Victor Smorgon

Foundation Members

Robert and Elizabeth Albert
Marc and Eva Besen
Stephen and Jenny Charles
Alex and Elizabeth Chernov
Peter and Jan Clark
Joan Clemenger
Christine and John Collingwood
Bill and Jan Conn
Ray Finkelstein and Leonie Thompson
Peter and Lesley Griffin
Peter and Mary Hayes
Kim and Mary Lou Jelbart
Tom and Sylvia Lowenstein
Macquarie Bank Limited
Jim and Katherine Morgan
Nigel and Diana Morgan
Baillieu and Sarah Myer
Peter McMahon
Thomas and Sue Quirk
Robert and Rosemary Simpson
Sam and Minnie Smorgon
Margaret Stewart
Chris and Cheryl Thomas
Sandra and Leon Velik
Gerry and Elisabeth Wagner
Ralph and Barbara Ward-Ambler AM
David and Margaret Walsh
Norman and Joan Wettenhall
David Wynn
Victor Wynn of Whitton Holdings



Paul Partos *Portrait of Hal Hattam* 1982
synthetic polymer on paper
75.5 x 56.5 cm
Collection Kate Hattan, Melbourne



**GEORGES MORA FOUNDATION
continued**

Foundation Donors

Alan Cornell of Blake Dawson Waldron
Australian Galleries
Carrillo Gantner
Richard and Isabella Green
Peter and Neroli Hansen
Alex and Marjory Lynch
Ian and Gael McRae
Mallesons Stephen Jaques
Elizabeth Morgan
Maudie Palmer
Ruth and Ralph Renard
Len and Eve Ryder
Berek and Marysia Segan
Tom and Karin Smyth
Lyn Williams
Michael and Prue Wright

GENERAL MUSEUM OPERATIONS

Heide received a variety of donations (cash and in-kind) which contribute to daily operations. These included:
Wesfarmers Energy's donation of gas heaters for the Loti Smorgon Courtyard

DONORS AND PARTNERS continued

ANNUAL PARTNERS

Heide Museum of Modern Art would like to thank all of our 2003 Partners who contributed to the Museum and its programs. Partnerships are crucial to Heide's ability to produce and deliver our annual program of exhibitions, public and education events, other projects and general services. Such support also ensures our future strategic planning and development.

The Annual Partnership structure was revised in 2003 to include a category Education & Public Programs Partners.

ANNUAL PARTNERS (BY CATEGORY)	ORGANISATION
Government Partner	Arts Victoria
Principal Partners	Domaine Chandon The Ian Potter Foundation (triennial funding ending September 2003)
Education & Public Programs Partners	Manningham City Council Department of Education and Training (NEW)
Industry Partners	Aalto Colour Blakes Feast (ending June 2003) John Brash Fotograffiti Ron Butters (ending June 2003) Christie's Australia Pty Ltd (NEW) Damm Fine Food (NEW) Image Online Gollings Pidgeon (NEW) Web Prophets Pty Ltd

EXHIBITION PARTNERS (BY EXHIBITION)	ORGANISATION
<i>Douglas Annand: The art of life</i>	National Gallery of Australia Australian Air Express
<i>Soft Steel, eX de Medici – Recent Work</i>	L'Oréal Melbourne Fashion Festival
<i>SUBLIME 25 Years of the Wesfarmers Collection of Australian Art</i>	Wesfarmers Arts Visions of Australia Art on the Move Arts WA Victorian Government Indemnification Scheme
<i>This was the future...Australian Sculpture of the 1950s, 60s, 70s & today</i>	Corrs Chambers Westgarth Gordon Darling Foundation
<i>Judging Architecture: Victorian Architecture Awards 1929 – 2003</i>	Gollings Pidgeon Royal Australian Institute of Architects
<i>Australian Surrealism The Agapitos/Wilson Collection</i>	The Art Gallery of South Australia Ord Minnett Visions of Australia Victorian Government Indemnification Scheme

STAFF AND VOLUNTEERS

CHIEF EXECUTIVE

Lesley Alway
Director (from August)
Warwick Reeder
Director (to May)
Hugh Drummond
Acting Director (May to July)

STAFF

Tim Alves
Museum Supervisor
(to December)
Julie-Anne Carbon
Museum Services Manager
(to July)
Stephanie Crichton
Registrar, Collection Projects
(from April)
Rosalie Dance
Education and Community
Programs Manager
Maria Davies
Visitor Services Manager
(from July) / Museum Supervisor
(to July)
Anna Draffin
Marketing and Development
Manager (from January)
Jessica Fren
Executive Officer
Kelly Gellatly
Assistant Curator (to April)
Simon Gregg
Membership Administrator (from
August) and Museum Supervisor
Louise Hall
Education Officer
(from February)
Melissa Keys
Merchandise Manager

Anna Luzza
Payroll Officer (to December)
Maggie Maguire
Marketing and Development
Manager (to January)
Jennifer Marshallsea
Business Manager (to July)
Susanne Meier
Accountant (from September)
Kendrah Morgan
Assistant Curator (from July)
Noel O'Keefe
Head Gardener
Rebecca Renshaw
Museum Supervisor (from
December) / Museum
Assistant (to December)
Jennifer Ross
Registrar
Carol Ryan
Community Access Officer (to
December)
Alison Sadler
Digitisation Project Coordinator
(to September)
Zara Stanhope
Senior Curator
Margaret Swallow
Finance Officer

STAFF – CASUAL

Michael Baxter
Framer
Gary 'Spook' James
Art Handler and Installation
Efthimia Kranitis
MAMAS Project Coordinator
(to April)

Stella Loftus-Hills
Museum Assistant (from August)
Mark Malmberg
Museum Assistant
Cassie May
Museum Assistant
Travis McArtney
Gardener
Lachlan Plain
Gardener
Libby Richardson
Museum Assistant
Tanya Simmons
Museum Assistant (from August)
Tracey Smith
Museum Assistant
Chris Stewart
Gardener
Bernadette Zajd
Museum Assistant (from July)

STAFF AND VOLUNTEERS

continued

VOLUNTEER GUIDES

Valma Angliss AM
Gaynor Cuthbert
Leona Haintz
Geraldine Hamer
Ngairé Johansen
Julianne Lewis
Jill Nicol
Jane Robinson
Jennifer Stanisich
Alison Steel
Peter Thomas

VOLUNTEERS

Donald Anderson
Annette Bangay
Helen Barnes
Catherine Bennetts
Esmene Beyzade
Bronwyn Blackie
Patsy Blair
Jenna Blyth
Jules Burns
Illona Caldow
Anne Carpenter
Sonya Chandra
Alex Christopoulos
Marion Cooper
Kim Devlin
Janine Doyle
Amelia Easdale
Anne Falvey
Shaun Fielding
Tasha Forgan
Justin Gayner
Robin Gibson
Connie Handrinos
Claire Haslope

Margot Hatcher
Lynden Hayes
Louise Heinrich
Bridget Hooper
Ingrid Horn
Samantha Howe
Madeleine Jenkins
Katherine Karamitsis
Denise Keele-Bedford
Sally Kerr
Mira Kolieb
Jan Kondarovskas
Narelle Law
Kelly Leahey
Lillian Lim
Stella Loftus-Hills
Caroline Love
Shirley Lum
Mark Malmberg
Alice Man
Cassie May
Paul McAsey
Rachael McCully
Lisa McDonald
Anne McLachlan
Denise McWilliam
Jan Messelheiser
Michelle Mills
Adele Monaco
Rae O'Shaughnessy
Kate O'Toole
Marina Perkovich
Wendy Peters
Kathleen Phillip
Brian Pieper
Lachlan Poulton
Vivienne Reed
Marion Reid
Rebecca Renshaw

Jane Robinson
Simon Rowley
Gillian Rush
Heidi Sangster
Elizabeth Scales
Simone Schmidt
Adrienne Schultze
Kerry Schuurmans
Pete Silvester
Jan Simmons
Tanya Simmons
Tracey Smith
Judy So
Sue Stergo
Gareth Stokoe
Alinta Stoutjesdijk
Celia Sutterby
Ross Trounce
Emma Van Leest
Brigitte Vroombout
Bridget Walker
Tamara Watt
Merron Williams
Nancy Wood
Bernadette Zajd

**INTERNSHIPS AND
SECONDMENTS**

Sarah Browne
Louise Lynch
Rachel McCully
Peter Silvester
Ni Wayan Suarniti

DIRECTORS' DECLARATION

The directors of the company declare that the concise financial report of Heide Park and Art Gallery for the year ended 31 December 2003:

- a) complies with Accounting Standard AASB 1039: Concise Financial Reports, and
- b) has been derived from and is consistent with the full financial report of Heide Park and Art Gallery.

Signed in accordance with a resolution of the Board



Mr Trevor Tappenden
Chairman, Board of Directors
7 April 2004

STATEMENT OF FINANCIAL PERFORMANCE FOR THE YEAR ENDED 31 DECEMBER 2003

	2003	2002
	\$	\$
Operating activities		
Revenues from operating activities	2,206,671	1,559,745
Expenses from operating activities	(2,459,496)	(2,362,809)
Net deficit from operating activities	(252,825)	(803,064)
Capital development activities		
Revenues from capital development activities	789,645	597,617
Surplus / (deficit) from ordinary activities	536,820	(205,447)
Net increase / (decrease) in asset revaluation reserve	(221,548)	12,308,039
Total changes in members funds	315,272	12,102,592

The accompanying notes form part of this concise financial report.

**FINANCIAL
STATEMENTS**

**STATEMENT OF FINANCIAL POSITION
AS AT 31 DECEMBER 2003**

	2003 \$	2002 \$
Current Assets		
Cash Assets	996,182	825,339
Receivables	1,633,604	1,069,494
Inventories	84,341	50,016
Other	72,360	32,169
Total Current Assets	2,786,487	1,977,018
Non-Current Assets		
Receivables	205,600	633,900
Other financial assets	587,591	896,859
Works of art	22,186,455	21,568,045
Property, plant and equipment	6,332,090	5,782,659
Capital work in progress	18,387	1,456,100
Total Non-Current Assets	29,330,123	30,337,563
Total Assets	32,116,610	32,314,581
Current Liabilities		
Payables	242,627	486,384
Interest bearing liabilities	45,545	-
Provisions	37,915	46,531
Other	1,766,419	1,282,357
Total Current Liabilities	2,092,506	1,815,272
Non-Current Liabilities		
Interest bearing liabilities	61,195	-
Provisions	5,471	15,315
Other	205,000	1,046,828
Total Non-Current Liabilities	271,666	1,062,143
Total Liabilities	2,364,172	2,877,415
Net Assets	29,752,438	29,437,166
Members Funds		
Reserves	24,792,770	25,008,318
Accumulated surplus	4,959,668	4,428,848
Total Members Funds	29,752,438	29,437,166

**STATEMENT OF CASH FLOWS
FOR THE YEAR ENDED 31 DECEMBER 2003**

	2003 \$	2002 \$
Cash flows from operating activities		
Receipts from operating activities	425,202	463,713
Operating grant receipts	770,000	340,000
Other grant receipts	194,359	50,465
Other receipts	178,845	324,052
Payments to suppliers and employees	(2,327,193)	(2,075,620)
Dividends received	90,028	109,823
Interest received	33,630	7,962
Net cash outflow from operating activities	(635,130)	(779,605)
Cash flows from investing activities		
Capital grant and pledge receipts	387,093	644,509
Proceeds from sale of investments	453,653	312,015
Payments for cultural assets	(3,197)	(57,563)
Payments for property, plant and equipment	(31,576)	(251,458)
Net cash inflow from investing activities	805,973	647,503
Net cash flows for the year	170,843	(132,102)
Cash at beginning of the financial year	825,339	957,441
Cash at end of the financial year	996,182	825,339

The accompanying notes form part of this concise financial report.

NOTES TO AND FORMING PART OF THE CONCISE FINANCIAL REPORT FOR THE YEAR ENDED 31 DECEMBER 2003

NOTE 1

Basis of preparation of the concise financial report

The concise financial report has been prepared in accordance with Accounting Standard AASB 1039: Concise Financial Reports and the Corporations Act.

The financial statements, specific disclosures and other information included in the concise financial report is derived from and is consistent with the full financial report of Heide Park and Art Gallery. The concise financial report cannot be expected to provide as detailed an understanding of the financial performance, financial position and financing and investing activities of Heide Park and Art Gallery as the full financial report.

The company has changed its accounting policies in the year in relation to building fund donations and non-cash sponsorship. All donations are now recognised as income as they are received, with all donations previously received brought to account. Non-cash sponsorship is recognised as income and is matched by expense items.

All other accounting policies have been consistently applied by Heide Park and Art Gallery and are consistent with those of the previous financial year.

NOTE 2

Operating revenue and expenses

	2003 \$	2002 \$
Operating revenue		
Arts Victoria Triennial Grant	650,000	300,000
Arts Victoria Maintenance Grant	51,349	61,700
Other government grants	191,247	10,875
Admissions	220,038	248,605
Retail sales	150,602	215,108
Sponsorship	13,652	50,937
Sponsorship - non cash	146,060	-
Donations	25,514	89,485
Donations - works of art	6,000	123,679
Proceeds on sale of shares	446,872	314,133
Investment income	143,858	117,785
Other revenue	161,479	27,438
Total operating revenue	2,206,671	1,559,745

	2003 \$	2002 \$
Operating expenses		
Employee benefits	839,904	779,159
Marketing expenses	272,607	86,675
Exhibition expenses	227,330	200,014
Depreciation and amortisation	179,084	115,831
Cost of investments sold	302,489	166,655
Other expenses	638,082	1,014,475
Total operating expenses	2,459,496	2,362,809

NOTE 3

Segment information

The company operates from one geographic location in Melbourne. The principal activities of the company, which is a company limited by guarantee, are the operation and development of the Heide Park and Art Gallery.

NOTE 4

Members' Guarantee

Each member of the company guarantees to contribute to the assets of the company in the event of it being wound up, to the extent of fifty dollars.

NOTE 5

Reserves

Asset revaluation reserve	14,024,597	14,246,145
Donated works of art reserve	10,768,173	10,762,173
Total reserves	24,792,770	25,008,318

NOTE 6

Graeme Sturgeon Memorial Trust

Heide Park and Art Gallery acts as trustee for the Graeme Sturgeon Memorial Trust, a trust established to promote the creation and appreciation of Australian contemporary sculpture. The trust funds are administered by the company but are excluded from the financial statements, as the funds must be appropriated in accordance with the deed of trust. At year end the balance of the trust fund was \$31,985.

NOTES TO AND FORMING PART OF THE CONCISE FINANCIAL REPORT FOR THE YEAR ENDED 31 DECEMBER 2003

DISCUSSION AND ANALYSIS OF THE FINANCIAL STATEMENTS

Information on Heide Park and Art Gallery concise financial report.

The financial statements and disclosures in the concise financial report have been derived from the 2003 Financial Report of Heide Park and Art Gallery. The discussion and analysis is provided to assist members in understanding the concise financial report. A copy of the full financial report and auditors report will be sent to any member, free of charge, upon request.

Statement of Financial Performance

The surplus for the year was \$536,820 (2002 deficit \$205,447).

The significant improvement in the result is mainly due to:

- An increase in the Triennial grant of \$350,000
- Change in accounting policy relating to the recognition of donations for the building development, adding \$409,554 to income this year
- Change in accounting policy relating to the recognition of non-cash sponsorships, adding \$146,060 to income and expenses

The movement in the asset revaluation reserve is due to:

- the final valuation of the collection by Christie's being increased by \$609,940
- the director's valuation of the work in progress on leasehold improvements resulting in a decrement of \$831,488

Statement of Financial Position

Net assets increased by \$315,000 to \$29,752,438. The increase is mainly attributable to the following:

- Revaluation of works of art by \$618,410
- Reduction of deferred income by \$357,766 due to the change in accounting policy relating to building fund donations

Statement of Cash Flows

Cash flows have not changed significantly since 2002. The net operational cash flow has decreased slightly to a net outflow of \$635,130 (2002 \$779,605).

The net investing cash flow has increased to \$805,973 (2002 \$647,503) due to a reduction in payments for the redevelopment.

Heide Museum of Modern Art

7 Templestowe Road

Bulleen Victoria 3105

T 613 9850 1500

F 613 9852 0154

moma@heide.com.au

www.heide.com.au

This report can be downloaded
at www.heide.com.au

ABN 60 005 712 943

ACN 005 712 943

**Heide
Museum of
Modern Art**
Heide