

## Albert Tucker: Mobile Home

21 September 2019 to 23 February 2020  
Albert & Barbara Tucker Gallery  
Curator: Brooke Babington

**HEIDE**  
**MUSEUM**  
**OF MODERN**  
**ART**



Installation view  
*Albert Tucker: Mobile Home*  
Photograph: Christian Capurro

In 1952, Albert Tucker famously designed and constructed a fully functional caravan from his room in the Hotel de Verneuil on Paris' Left Bank. Much to the intrigue and amusement of the hotel proprietor, Monsieur Dumont, and the local police, Tucker built the caravan components from masonite by hand before lowering each piece from the hotel window into the street below, where he assembled the whole. He attached the caravan to a trailer base he had bought from the side of the road for the price of 1,000 francs, plus an American radio.

Tucker lived in the caravan with his partner Mary Dickson on the banks of the Seine for several months before the pair departed Paris for the south of France and Italy with the caravan in tow. Over the course of the next four years the subject matter of Tucker's paintings shifted dramatically, inspired both by the cultural histories he encountered and by memories of home. In place of themes of the city and its harsh realities that had preoccupied him since the war, the trip brought with it the opportunity to consider Australia from a different vantage point and was the catalyst for a new and fruitful period of engagement with Australian myth-making.

Taking the metaphor of the caravan as a mobile home as its starting place, this exhibition explores how Tucker internalised themes from Australia and carried them with him through his travels. Existing beyond the physical bounds of place, here the concept of 'home' stretches to encompass the interior domains of psychology and imagination, memory and projection.

# List of works

This catalogue is arranged alphabetically by artist then chronologically.  
Measurements are height before width before depth. Works on paper are sheet size.

## Bob Jenyns

born 1944, Melbourne, Victoria. Lived and worked Daylesford, Victoria and Hobart, Tasmania. Died 2015, Hobart



*Pont de l'Archevêché* 2007  
aluminium, steel and timber  
170 x 90 x 340 cm (installation  
dimensions variable)  
Gift of Parks Victoria 2019

## Albert Tucker

born 1914, Melbourne, Victoria. Lived and worked Melbourne. Died 1999



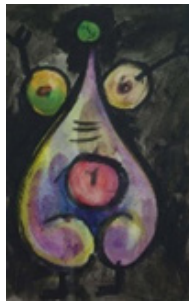
*Camping in the Morris Minor, the Dolomites, Italy, with Mary Dickson* c.1951  
gelatin silver photograph  
40.2 x 30.4 cm  
Gift of Barbara Tucker 2001



*Untitled (Man and Woman with Infant)*  
c.1951  
pencil on paper  
21 x 27 cm  
Albert & Barbara Tucker Foundation



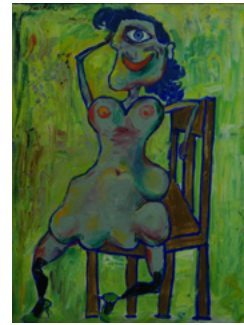
*Mary Dickson in the Caravan* c.1952  
exhibition print from original gelatin  
silver photograph  
29 x 40.5 cm  
Albert Tucker Archive  
Heide Museum of Modern Art



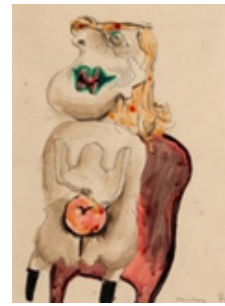
*Untitled (Woman)* 1950  
watercolour and gouache on paper  
48 x 31 cm  
Private collection, courtesy of Sotheby's  
Australia



*Antipodean Head* 1951  
oil, pastel and gouache on composition  
board  
23.5 x 17 cm  
Private collection, courtesy of Sotheby's  
Australia



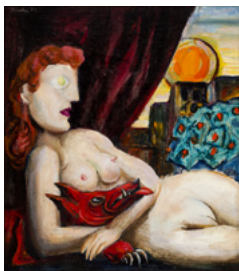
*Sitting Girl* 1951  
oil on plywood  
61 x 46 cm  
Albert & Barbara Tucker Foundation



*Study for the Old Eve* 1951  
ink and watercolour on paper  
26 x 19 cm  
Collection of Adam Haddow



*Woman* 1951  
oil on plywood  
60 x 44 cm  
Heide Museum of Modern Art  
On long-term loan from the Albert &  
Barbara Tucker Foundation



*Woman and Beast* 1951  
oil on board  
50.9 x 45.5 cm  
Heide Museum of Modern Art  
Gift of Barbara Tucker 2014

---



*Woman and Bird* 1951  
oil on composition board  
50.8 x 45.5 cm  
Heide Museum of Modern Art  
On long-term loan from the Albert &  
Barbara Tucker Foundation

---



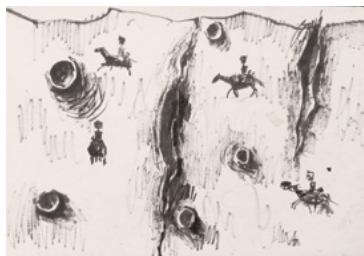
*Untitled (Antipodean Head I)* c.1956  
monoprint and oil on paper  
32 x 22 cm  
Albert & Barbara Tucker Foundation

---



*Untitled (Armoured Bushranger)* c.1956  
fibre-tipped pen on paper  
22 x 16.2 cm  
Albert & Barbara Tucker Foundation

---



*Untitled (Cratered Landscape with  
Bushrangers)* c.1956  
fibre-tipped pen on paper  
22.2 x 32.1 cm  
Albert & Barbara Tucker Foundation

---



*Untitled (Mounted Bushranger)* c.1956  
fibre-tipped pen on paper  
32 x 22.7 cm  
Albert & Barbara Tucker Foundation

---



*Untitled (Shooting at Stringybark Creek  
2)* c.1956  
oil on paper  
22.5 x 32.3 cm  
Albert & Barbara Tucker Foundation

---



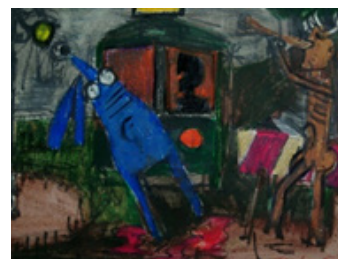
*Untitled (Surrendering Bushranger)*  
c.1956  
monoprint and oil on paper  
32.2 x 22 cm  
Albert & Barbara Tucker Foundation

---



*Mary Dickson at Galerie Huit* 1952  
gelatin silver photograph  
30.5 x 40.3 cm  
Heide Museum of Modern Art  
Gift of Barbara Tucker 2001

---



*Street Accident* 1952  
coloured pencil on paper  
15.5 x 20 cm  
Albert & Barbara Tucker Foundation

---



*Camping in the Piazza del Popolo, Rome,  
Italy* 1953  
gelatin silver photograph  
40.4 x 30.5 cm  
Heide Museum of Modern Art  
Gift of Barbara Tucker 2001

---



*Bus Stop* 1954  
oil on composition board  
62 x 81 cm  
Heide Museum of Modern Art  
Gift of the Albert and Barbara Tucker  
Foundation 2017

---



*Duel* 1954  
oil on composition board  
81 x 62 cm  
Heide Museum of Modern Art  
On long-term loan from the Albert &  
Barbara Tucker Foundation

---



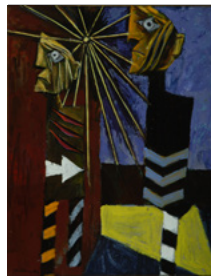
*Killing* 1954  
oil on composition board  
81 x 62 cm  
Heide Museum of Modern Art  
On long-term loan from the Albert &  
Barbara Tucker Foundation

---



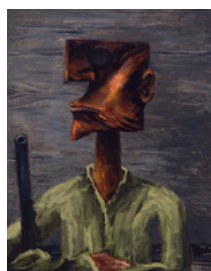
*Street Accident* 1954  
oil on composition board  
35 x 45.5 cm  
Heide Museum of Modern Art  
On long-term loan from the Albert &  
Barbara Tucker Foundation

---



*Wounded Figures* 1954  
oil on composition board  
81 x 62.4 cm  
Heide Museum of Modern Art  
On long-term loan from the Albert &  
Barbara Tucker Foundation

---



*Armoured Figure* 1955  
oil on composition board  
80.5 x 63 cm  
Heide Museum of Modern Art  
On long-term loan from the Albert &  
Barbara Tucker Foundation

---



*Encounter* 1955  
oil on composition board  
94.4 x 129 cm  
Heide Museum of Modern Art  
On long-term loan from the Albert &  
Barbara Tucker Foundation

---



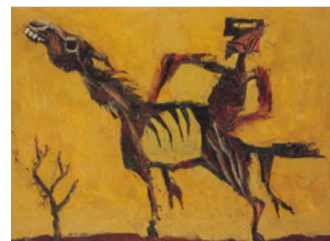
*Enduring Figures* 1956  
oil on composition board  
94.3 x 129 cm  
Heide Museum of Modern Art  
On long-term loan from the Albert &  
Barbara Tucker Foundation

---



*Head* 1956  
oil on composition board  
66 x 48 cm  
Albert & Barbara Tucker Foundation

---



*Metamorphosis of Ned Kelly* 1956  
synthetic polymer paint on composition  
board  
96 x 129 cm  
Private collection, courtesy of Lauraine  
Diggins Fine Art, Melbourne

---



*Explorer* 1957  
synthetic polymer paint and collage on  
composition board  
48 x 68.5 cm  
Heide Museum of Modern Art  
On long-term loan from the Albert &  
Barbara Tucker Foundation

---



*Tattooed Head* 1957  
oil on composition board  
62.1 x 80.9 cm  
Heide Museum of Modern Art  
On long-term loan from the Albert &  
Barbara Tucker Foundation

---



*Cratered Head* 1958–60  
synthetic polymer paint on  
composition board  
122 x 101 cm  
Heide Museum of Modern Art  
Gift of the Albert & Barbara Tucker  
Foundation 2019

---

**Unknown**

---



*Albert Tucker Loading the Caravan* c.1952  
exhibition print from original gelatin  
silver photograph  
34 x 40.8 cm  
Albert Tucker Archive  
Heide Museum of Modern Art

---



*Albert Tucker and Sidney Nolan in  
Cerveteri, Italy* 1956  
exhibition print from original gelatin  
silver photograph  
34 x 40 cm  
Albert Tucker Archive  
Heide Museum of Modern Art

---