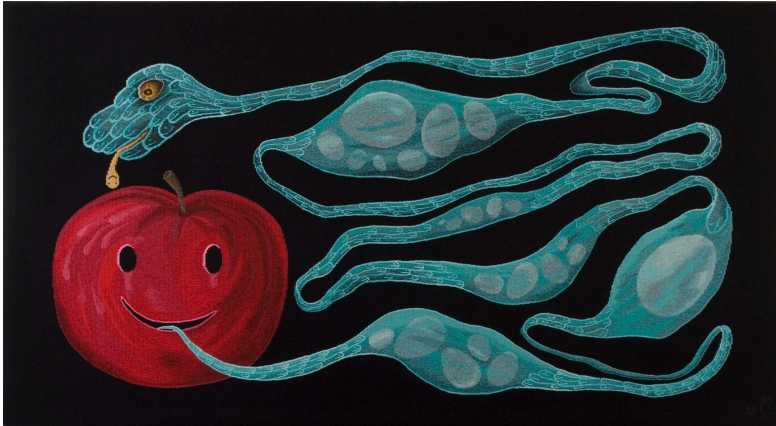


HEIDE MUSEUM OF MODERN ART ANNOUNCES 30 YEAR THEMATIC SURVEY EXHIBITION BY NELL



Heide Museum of Modern Art has today announced a major exhibition by celebrated Australian artist **Nell**, taking over the award-winning Heide Modern building, from **11 October 2025 to 8 March 2026**.

Titled ***Face Everything***, the site-responsive exhibition will see **Nell** transform the former home into a vibrant, layered environment populated with more than **85** works from across her 30-year career, including over **50** new works.

Drawing on the domestic history of Heide Modern and its surrounding gardens, **Nell** reimagines the house as both a home and a nest – a place of shelter, memory and shared experience. Incorporating found household objects alongside natural motifs from the Heide environs, such as birds, snakes, apples, leaves and eggs, she animates the house with tapestries, mosaics, sculptures and intimate works that reference John and Sunday Reed's desire for the house to be a 'gallery to be lived in' – where art, nature and daily life were entwined.

Within this setting, Nell's works become charged with reflections on life cycles, care, tenderness, gendered labour, animism, pop culture, rock and roll, religion and art history. Combining everyday materials with meticulous hand-crafted and fabricated forms, she explores the tension between what is slow and precious, and what is fleeting and ordinary.

Nell also explores the opposition and integration of interior and exterior spaces, reflecting architect David McGlashan's intention for the building to blur the boundaries between house and landscape. Her works speak to both the physical connection between Heide Modern and its natural environment, and to our psychological inner worlds, evoking the constant negotiation between inside and outside, self and surroundings.

Nell said: *"For this exhibition my extended family of characters and spirits will inhabit Heide Modern. Together, they hold space for celebration and joy, complexity and grief, and everything in between"*

MEDIA RELEASE

12 Sept 2025



"Throughout my practice I've used simple faces—from open-mouthed 'oohs' in eggs and ghosts to smiley faces in just about everything—as a way to bypass intellect and invite an immediate, emotional response. Like a song that cuts to the heart, for me the simplest artworks go the deepest."

Ghosts have been a constant presence in my work. They grew out of self-reflection and therapy, and from a desire to acknowledge the shadows in my life rather than push them away. I'm drawn to the places where light and dark overlap, where contradictions can sit side by side".

Heide Museum of Modern Art Director Lesley Harding said: *"We are delighted to have Nell take over Heide Modern with a site-responsive exhibition that captures the spirit of the place. Face Everything brings another dimension to this domestic space, drawing out its histories and reimagining it as a living, breathing environment. Nell's ability to move between joy and grief, the everyday and the symbolic, makes this exhibition both engaging and deeply resonant."*

Ends

IMAGES available [HERE](#)

MEDIA CONTACTS: For further information or interview requests, contact Siân Davies, sian@articulateadvisory.com, 0402 728 462, or Claire Martin, claire@articulateadvisory.com, 0414 437 588 .

ABOUT NELL



Nell's multifaceted practice explores the thresholds and complexities of the contemporary human experience. Growing up in regional Australia, DIY projects and music on the radio were Nell's lifeline, her connection to the world and the formation of her selfhood. From a distinctly Antipodean perspective, she draws upon art history, popular culture, rock'n'roll, religious texts, Buddhist spiritual teachings, chance and coincidence, to create works that are at once playful, insightful and poetic.

Nell has developed a unique visual language that traverses scale, medium and materiality. Regardless of the outcome, her work explores oppositional thresholds and the fertile space that exist beyond the binary: from intimate to immersive, found to fabricated, high to low culture, two-dimensions to three-dimensions, individual to collaborative, ancient to contemporary, sacred to profane. She uses recognisable motifs, including smiley faces, ghosts, eggs, teardrops, lightning bolts and crosses, as well as text taken from the world around us, to communicate universal themes of birth and death and everything

MEDIA RELEASE

12 Sept 2025



in between. At the heart of Nell's practice is an offering of connection and companionship; a reminder that we are not alone.

Across three decades, Nell's work has been included in over 300 exhibitions in Australia and abroad. Significant recent solo exhibitions include: *Nell x Colin McCahon: Through the Wall of Birth and Death*, The Dowse Art Museum, Lower Hutt, NZ (2024), *Old New Wave*, Linden, Melbourne, VIC (2023) and in 2016, Shepparton Art Museum presented an eponymously titled survey exhibition of Nell's works, *NE/LL*. Group exhibitions include; *RE-PAIR*, Tennessee Triennial, Engine for Art, Democracy & Justice, Vanderbilt University, Nashville, Tennessee, US (2023), *Know My Name: Australian Women Artists 1900 to Now*, National Gallery of Australia, Canberra (2021), *No Place Like Home*, MONA FOMA, K&D Warehouse, Hobart, TAS (2021), *The National: New Australian Art*, Museum of Contemporary Art, Sydney (2017) and the Adelaide Biennial of Australian Art 2016: *Magic Object*, Art Gallery of South Australia, Adelaide (2016). A monograph on her work, published by Thames and Hudson, was released in 2020.

ABOUT HEIDE

Heide is a public art museum and sculpture park located on a stretch of the Birrarung/Yarra River in Naarm/Melbourne that has long served as a meeting point and as a creative hub.

Once a significant Wurundjeri gathering place, the site later attracted the artists of the Australian Impressionist School before becoming the home of art patrons John and Sunday Reed in 1934.

The Reeds and their circle of artists and writers embraced the brave and the new in art and ideas and their spirited legacy inspires the museum's activities today, from collaborating with emerging and mid-career artists to celebrating those who have made major contributions to Australian and international art.

Set on 6.5 hectares of parkland with five gallery spaces, award-winning architecture and a distinctive collection of more than 3,600 works of art, Heide holds a special place in the cultural landscape of Australia.

heide.com.au

IMAGE CAPTIONS:

1. Nell, *Let me put my love into you*, 2006, wool and cotton, 161 x 300cm, Commissioned by Deutsche Bank, Sydney. Woven by the Australian Tapestry Workshop, Melbourne. Deutsche Bank Collection, Sydney
2. Nell, *Everyday Happiness*, 2025, bronze (patina varied), 9.0 x 13.0 x 10.0 cm edition no. 4/5. Courtesy the artist and STATION, Australia. Fabrication Bronze: Crawfords Casting, Sydney.
3. Nell studio portrait by Mark Pokorny.